



Highlights from
Contemporary Edition

10 March 2021 | New York

CHRISTIE'S

NEW YORK PRINTS DEPARTMENT



Lindsay Griffith
Head of Department
New York



Richard Lloyd
International Head of
Department



Adam McCoy
Senior Specialist



Libia Elena Nahas
Senior Specialist



Lisa Machi
Junior Specialist



Emma Santucci
Cataloguer



Daniel Villanueva
Sale Coordinator

SALE COORDINATOR

Daniel Villanueva
dvillanueva@christies.com
Tel: +1 212 636 2174

For general enquiries about this auction, email should be addressed to the Sale Coordinator

SERVICES

AUCTION RESULTS
christies.com

CATALOGUES ONLINE
Lotfinder®
Internet: christies.com

POST-SALE SERVICES
Adriane Melchert
212 707 5950
Post-Sale Coordinator

Payment, Shipping and Collection
Tel: +1 212 636 2650
Fax: +1 212 636 4939
Email: postsaleUS@christies.com

WORLDWIDE

LONDON
James Baskerville
Stefano Franceschi
Alexandra Gill
Murray Macaulay
Tim Schmelcher
Charlie Scott
Tel +44 (0)20 7389 2328

NEW YORK
Lindsay Griffith
Richard Lloyd
Lisa Machi
Adam McCoy
Libia Elena Nahas
Emma Santucci
Tel +1 212 636 2290

PARIS
Frédérique
Darricarrère-Delmas
Tel +33 (0)1 40 76 85 71

MANAGING DIRECTOR

Julie Kim
jkim@christies.com
Tel: +1 212 636 2317

**HEAD OF SALE
MANAGEMENT**
Jennifer Chen
jenniferchen@christies.com
Tel: +1 212 636 2166

Kristen Underwood
KUnderwood@christies.com
Tel: +1 212 707 5902

HIGHLIGHTS FROM CONTEMPORARY EDITION

10 MARCH 2021

AUCTION

10 March at 10.00 am (Lots 1-89)
at 2.00 pm (Lots 90-182)

20 Rockefeller Plaza
New York, NY 10020

VIEWING

Viewing is by appointment only, 5-9 March.
To make an appointment and for more information, please contact:
dvillanueva@christies.com
Tel: +1 212 636 3749

NOTICE

Collection of property and shipping property to and from certain destinations is currently being impacted by the Coronavirus. Collection or shipment of your purchase will commence when circumstances permit. Quotes issued and expected delivery dates may be subject to change and there may be delays to the fulfillment of your shipment. Christie's is monitoring the situation and will keep you informed should circumstances relating to your quote and/or shipment change. Please contact the Post-Sale Department for any queries.

CONDITIONS OF SALE

Our Conditions of Sale-Buying at Christie's contain the terms of our contract with you. By registering to bid in this auction and/or by bidding on any lot(s) in this auction, you agree to be bound by those terms. You can find our Conditions of Sale-Buying at Christie's on our website located at www.christies.com/conditionsofsale

AUCTION CODE AND NUMBER

In making enquiries, this sale should be referred to as **PIERRE-19622**

AUCTION LICENSE

Christie's (#1213717)

AUCTIONEERS

Richard Lloyd (#1459445)
Diana Bramham (#1464939)
John Hays (#0822982)

PROPERTIES FROM

A Distinguished American
Collection

The Collection of Mary M. and
Robert M. Montgomery, Jr

The Kiki Kogelnik Foundation

A New York Collector, sold to
benefit Cornell University Library

Sold to benefit the Peter Strauss
Symposium on Livres D'Artistes

The Property of a Distinguished
Family Collection, New York

Specified lots (sold and unsold) marked with a filled square ■ not collected from Christie's by 5.00pm on the day of the sale will, at our option, be removed to Christie's Fine Art Storage Services (CFASS in Red Hook, Brooklyn). Christie's will inform you if the lot has been sent offsite.

If the lot is transferred to Christie's Fine Art Storage Services, it will be available for collection after the third business day following the sale.

Please contact Christie's Post-Sale Service 24 hours in advance to book a collection time at Christie's Fine Art Services. All collections from Christie's Fine Art Services will be by pre-booked appointment only.

Please be advised that after 50 days from the auction date property may be moved at Christie's discretion. Please contact Post-Sale Services to confirm the location of your property prior to collection.

Tel: +1 212 636 2650
Email: PostSaleUS@christies.com

Operation hours for both Christie's Rockefeller and Christie's Fine Art Storage are from 9:30 am to 5:00 pm, Monday - Friday.

9/10/18

Cover: Sam Francis, *Spleen (Red)* [detail]
© 2021 Sam Francis Foundation,
California / Artists Rights Society (ARS),
New York.

CHRISTIE'S



Browse this auction
and view real-time
results on the Christie's
App for iPhone and iPad

1 FRANK STELLA (B. 1936)

River of Ponds III, from *Newfoundland Series*


 lithograph in colors, on Special Arjomari paper, 1971, signed and dated in pencil, numbered 69/75 (there were also ten artist's proofs), published by Gemini G.E.L., Los Angeles, with their blindstamps and ink stamp on the reverse, with full margins, in good condition, framed

Image: 31 $\frac{7}{8}$ x 31 $\frac{3}{4}$ in. (810 x 807 mm.)

Sheet: 38 x 38 in. (965 x 965 mm.)

\$6,000-8,000

LITERATURE:

Axsom 52; Gemini 272



2 FRANK STELLA (B. 1936)

River of Ponds I, from *Newfoundland Series*



lithograph in colors, on Special Arjomari paper, 1971, signed and dated in pencil, numbered 50/78 (there were also ten artist's proofs), published by Gemini G.E.L., Los Angeles, with their blindstamps and ink stamp on the reverse, with full margins, in generally very good condition, framed
Image: 32 x 32 in. (813 x 813 mm.)
Sheet: 38 x 38 in. (965 x 965 mm.)



\$6,000-8,000

LITERATURE:

Axsom 50; Gemini 270



6 AGNES MARTIN (1912-2004)

On a Clear Day: one print



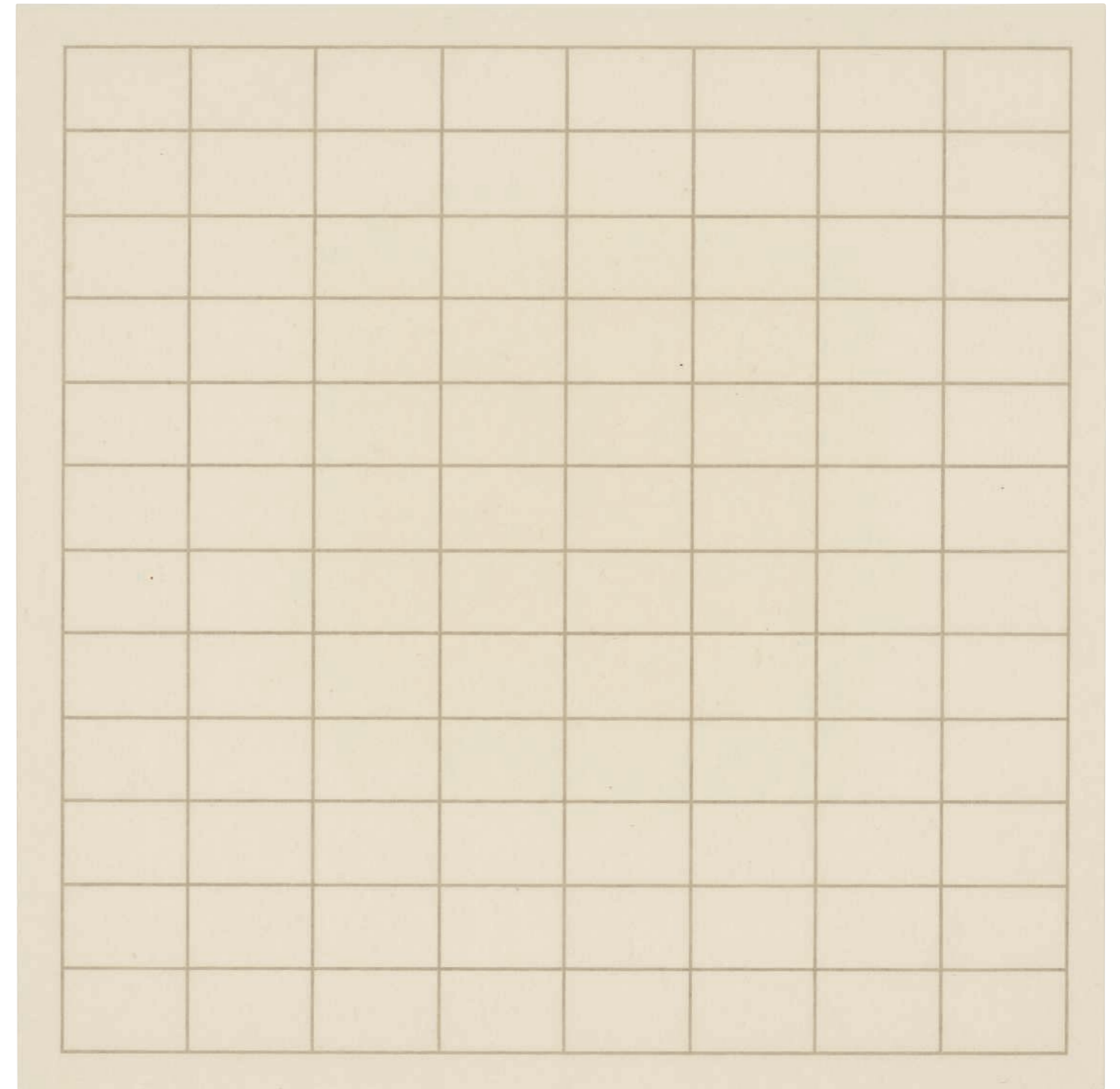
screenprint in gray, on Japan rag paper, 1973, signed in pencil, numbered 46/50 (there were also fourteen artist's proofs in Roman numerals), published by Parasol Press, S.A., New York, within the original Schoeller Parole mat and justification page, with full margins, in generally very good condition, framed
Overall: 14 $\frac{7}{8}$ x 14 $\frac{7}{8}$ in. (378 x 378 mm.)



\$4,000-6,000

Through simple and reductive means, Agnes Martin's works evoke a quiet serenity and meditative response. Martin rose to prominence in the New York art scene of the 1950s before she abandoned art making in 1967 and relocated to the New Mexican desert. Martin's print series, *On a Clear Day*, from 1973, inaugurated the second phase of Martin's career as an artist, and, like its title, announced a new clarity in Martin's resumed activity. In 1971, Martin traveled to Germany at the invitation of Luitpold Domberger to create a suite of prints to be published in 1973 by Robert Feldman's Parasol Press in New York. Martin was drawn to printmaking, and the silkscreen process in particular, for its ability to render sharp corners and straight lines.

The result of this collaboration was a portfolio of thirty prints, each a different permutation of a dark-grey grid printed on a neutral ground. The series unfolds with the expansion and contraction of each grid's proportions. These prints anticipate many of the considerations of Martin's second phase of work—and the Minimalist movement as a whole—including her sharp marks, graphic grids, and serial projects. In a draft for the statement accompanying the portfolio Martin wrote, "These prints express innosence [sic] of mind. If you can go with them and hold your mind as emty [sic] and tranquil as they are and recognize your feelings at the same time you will realize your full response to this work."



17 SAM FRANCIS (1923-1994)

Spleen (Red)



lithograph in colors, on Fabriano Italia paper, 1971, signed in pencil, numbered 23/27 (there were also nine artist's proofs), published by Gemini G.E.L., Los Angeles, with their blindstamps and ink stamp on the reverse, the full sheet, in generally very good condition, framed
Sheet: 35 x 78⁷/₈ in. (889 x 2000 mm.)

\$3,000-5,000

LITERATURE:

Lembark L130; Gemini 310



33 JASPER JOHNS (B. 1930)

Two Flags



lithograph, on Hanga paper, 1972, signed and dated '70-72' in crayon, numbered 35/36 (there were also nine artist's proofs), published by Universal Limited Art Editions, West Islip, New York, with their blindstamp, the full sheet, very pale light-staining, time staining, otherwise in good condition, framed
Sheet: 27¼ x 32¾ in. (692 x 822 mm.)

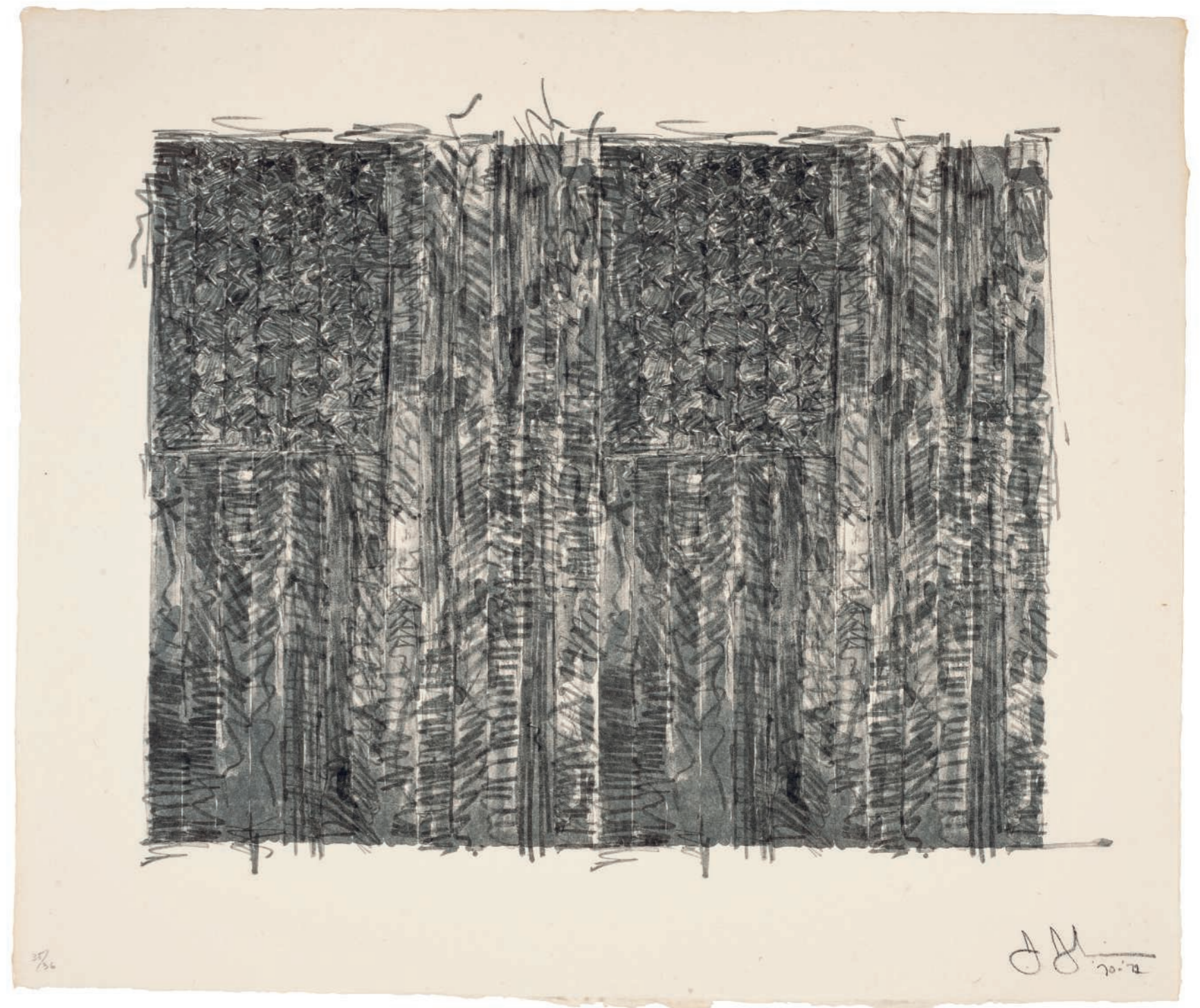


\$15,000-20,000

LITERATURE:

Universal Limited Art Editions 120

“To me the flag turned out to be something I had never observed before. I knew it was a flag, and had used the word flag; yet I had never consciously seen it. I became interested in contemplating objects I had never before taken a really good look at. In my mind that is the significance of these objects” - Jasper Johns



36 JASPER JOHNS (B. 1930)

Céline

lithograph, on Hanga paper, 1978, signed and dated '77' in pencil, numbered 'H.C. 4/4' (a *hors-commerce* impression, there was no edition), published by Universal Limited Art Editions, West Islip, New York, with their blindstamp, the full sheet, in very good condition, framed
Sheet: 38 $\frac{7}{8}$ x 27 $\frac{1}{4}$ in. (987 x 692 mm.)

\$25,000-35,000

LITERATURE:

Universal Limited Art Editions S15

This extremely rare print's title is for the French novelist, Louis-Ferdinand Céline. His writings convey both cynical attitudes and an attention to death, themes that Johns also regularly explored in his artistic practice. A painting, also titled *Céline* from the same year, comprises a series of handprints and crosshatches.

LOT ESSAY



PROPERTY OF A NEW YORK COLLECTOR, SOLD TO BENEFIT CORNELL UNIVERSITY LIBRARY

38 ROBERT RAUSCHENBERG (1925-2008)

Bellini #4

etching and aquatint, on Arches paper, 1988,
signed and dated in pencil, numbered 45/47
(there were also five artist's proofs), published
by Universal Limited Art Editions, West Islip,
New York, with their blindstamp, the full sheet,
in generally very good condition, framed
Sheet: 59 $\frac{7}{8}$ x 38 $\frac{1}{2}$ in. (1521 x 978 mm.)

\$8,000-12,000

LOT ESSAY



55 HELEN FRANKENTHALER (1928-2011)

Tales of Genji VI



woodcut with pochoir in colors, on tan TGL handmade paper, 1998, signed in pencil, numbered 32/35 (there were also fourteen artist's proofs), published by Tyler Graphics, Ltd., Mount Kisco, New York, with their blindstamp, the full sheet, in very good condition, framed
Sheet: 47 x 42 in. (1194 x 1067 mm.)

\$25,000-35,000

It was apparent from the beginning that what was needed was a new approach and technique for making what Helen strove for: a woodcut with painterly resonance.

- Ken Tyler



96 DAVID HOCKNEY (B. 1937)

Hotel Acatlán: First Day, from *Moving Focus*



lithograph in colors, on two sheets of TGL handmade paper, 1985, signed and dated '84/5' in pencil, numbered 19/70 (there were also eighteen artist's proofs in Roman numerals), published by Tyler Graphics, Ltd., Mount Kisco, New York, with their blindstamp, the full sheet, in very good condition, framed
Sheet: 28 $\frac{7}{8}$ x 74 $\frac{1}{4}$ in. (733 x 1886 mm.)



\$40,000-60,000

LITERATURE:

Museum of Contemporary Art Tokyo 269; Tyler 279

Moving Focus, Hockney's series of prints made with master printer Ken Tyler from 1984-1987, reflect the enduring influence of cubism on the artist, in particularly the work of Picasso, as well as an enthusiasm for Chinese scroll painting, with which Hockney had become fascinated. The title was taken from a chapter title in *The Principles of Chinese Painting* by George Rowley (1947), a book which had profoundly affected the artist's view of perspective. Hockney realised that the process of viewing the scroll, in which the image is gradually revealed from right to left as it is unfurled, had the effect of allowing the spectator into the picture in a new way. 'In my own photo-collages...I'd been pushing the notion of the observer's head swivelling about in a world which was moving in time, but I'd really only just begun to try and deal with how to portray movement of the observer's whole body across space. And that's precisely what the Chinese landscape artists had mastered' (David Hockney, quoted in: C. Simon Sykes, *Hockney: The Biography*, vol. 2, Century, London, 2014, p. 206). This insight had a profound effect on his most famous group of prints in the *Moving Focus* series, his views of the Hotel Acatlán, to which this lot belongs.

Hockney had discovered the Hotel Romano Angeles in the small town of Acatlán, Hidalgo Province, by accident after his car had broken down on a trip from Mexico City to Oaxaca. Arranged around a courtyard with tropical plants

and a well at its centre, it's rustic charm and colour had immediately appealed to the artist. On his return to Los Angeles Hockney contacted Ken Tyler to enlist his help. Tyler proposed a new lithographic method which he had recently developed, the mylar technique. Using prepared sheets of the semi-transparent plastic the technique allowed Hockney to overlay colour drawings, simulating the colour separation necessary for colour lithography, and to visualise the final effect, something which had not hitherto been possible. This was liberating for a colourist like Hockney, and the Hotel Acatlán prints are some of the most vibrant in his graphic oeuvre.

With its long rectangular format and shifting perspective, *Hotel Acatlán: First Day* strongly reflects the dual influences of cubism and Chinese painting on Hockney and his conviction that the viewer belongs in the picture and not outside it. In a letter to his friend R.B. Kitaj, Hockney elaborates: 'It has so many different perspectives that you are forced to move your eye constantly...It is a totally impossible view from one point, yet there is a clarity and order about the picture. The effect of the space is extremely strong, yet it is not an illusion you want to walk in to, because you are already in the picture and walking around' (David Hockney, *A Walk Around the Hotel Courtyard, Acatlán*, quoted in: *Hockney: The Biography*, p. 209).



114 MICHELANGELO PISTOLETTO (B. 1933)

La Rosa, from *The Drape Suite*

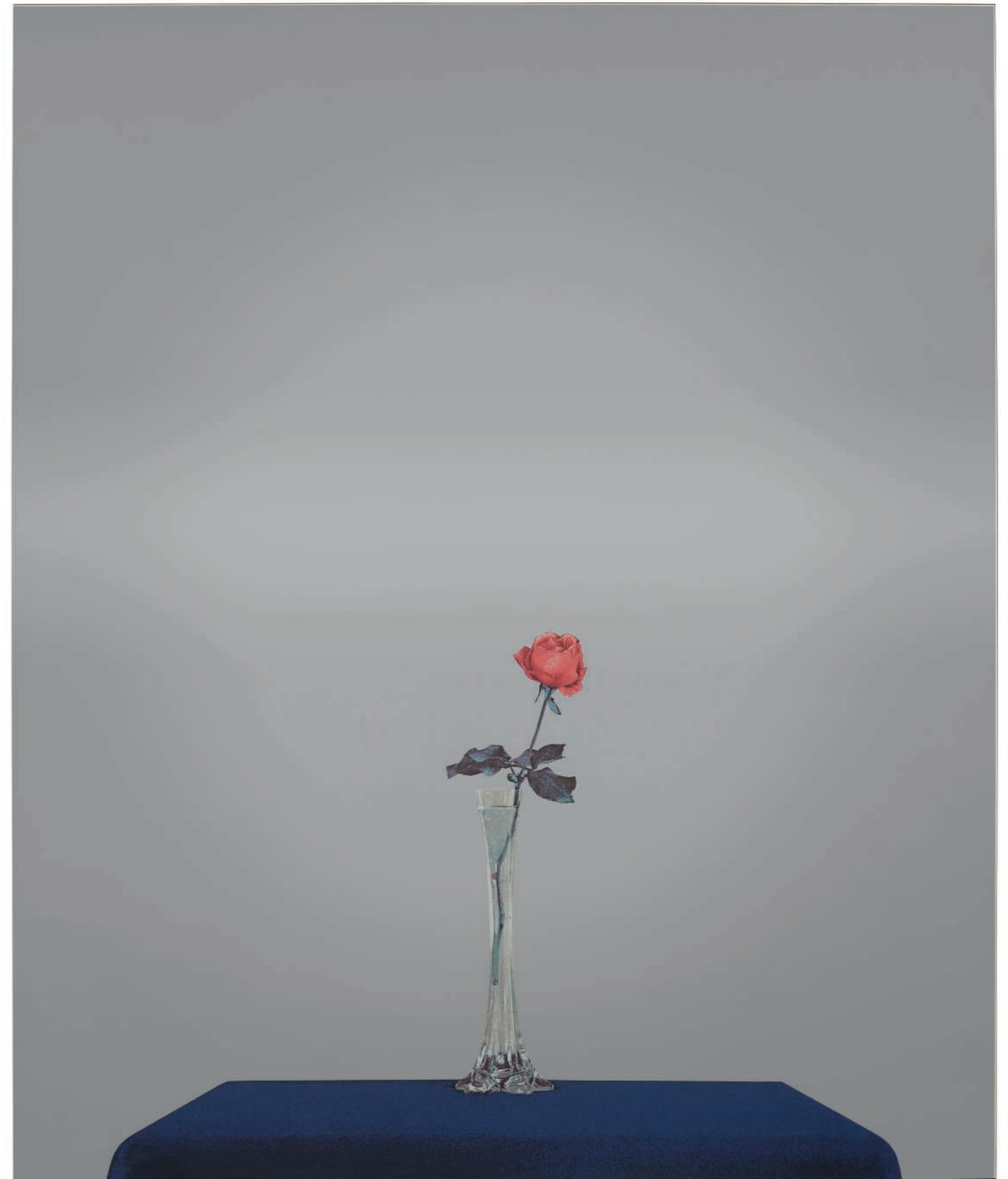


screenprint in colors, on polished stainless steel mirror, 1981, signed, titled and dated in black felt-tip pen on the reverse, numbered 28/60 (there were also ten artist's proofs in Roman numerals), in generally very good condition

Overall: 47 $\frac{3}{8}$ x 39 $\frac{1}{2}$ x 7 $\frac{1}{8}$ in. (1200 x 1000 x 22 mm.)

\$25,000-35,000

LOT ESSAY



115 MICHELANGELO PISTOLETTO (B. 1933)

Panni, from *The Drape Suite*

screenprint in colors, on polished stainless steel mirror, 1981, signed, titled and dated in black felt-tip pen on the reverse, numbered 28/60 (there were also ten artist's proofs in Roman numerals), in good condition
Overall: 47 $\frac{3}{8}$ x 39 $\frac{1}{2}$ x 7 $\frac{1}{8}$ in. (1200 x 1000 x 22 mm.)

\$25,000-35,000



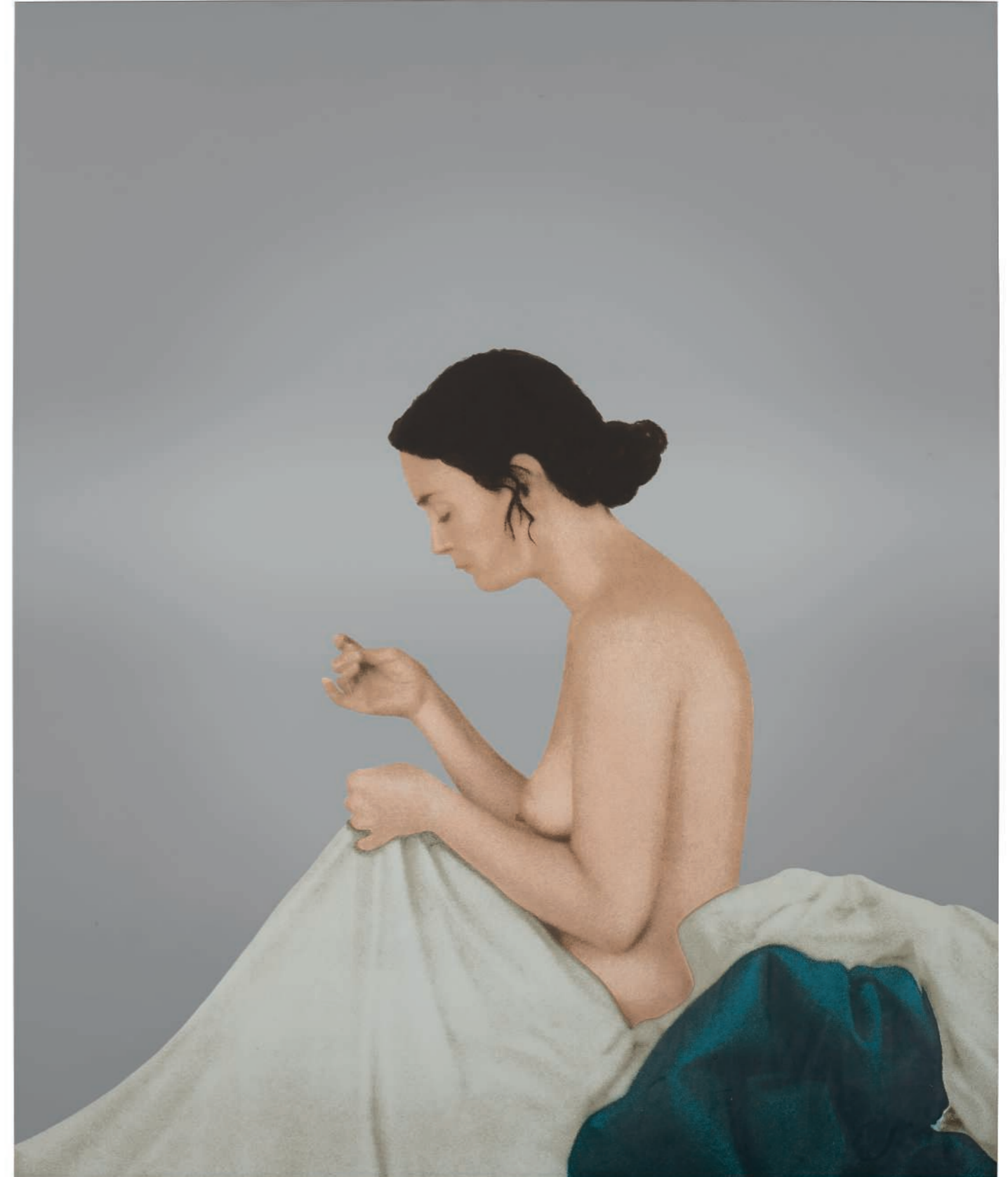
LOT ESSAY

116 MICHELANGELO PISTOLETTO (B. 1933)

La Cucitrice, from *The Drape Suite*

screenprint in colors, on polished stainless steel mirror, 1981, signed, titled and dated in black felt-tip pen on the reverse, numbered 28/60 (there were also ten artist's proofs in Roman numerals), occasional hairline scratches in the upper unprinted area, otherwise in good condition
Overall: 47 $\frac{3}{8}$ x 39 $\frac{1}{2}$ x $\frac{7}{8}$ in. (1200 x 1000 x 22 mm.)

\$25,000-35,000



LOT ESSAY

117 GERHARD RICHTER (B. 1932)

Frau mit kind (Woman with Child)

frequency modulated offset print in colors, on white cardboard, 2005, signed and dated in pencil, numbered 20/32 (there were also eight in Roman numerals), published by Joseph Heni, G.F., London, with full margins, in very good condition, in the original artist's frame

Image: 51 x 43¼ in. (1295 x 1200 mm.)

Sheet: 60¾ x 51½ in. (1543 x 1300 mm.)

\$40,000-60,000

LITERATURE:

Butin 130

LOT ESSAY



118 GERHARD RICHTER (B. 1932)

Seestück I (Seascape I)



black offset print, on white lightweight card, 1969, signed and dated in pencil, numbered 90/150, published by Gegenverkehr e.V., Zentrum für aktuelle Kunst, Aachen, Germany, with full margins, in good condition, framed
Image: 16 $\frac{5}{8}$ x 15 $\frac{5}{8}$ in. (422 x 400 mm.)
Sheet: 20 $\frac{1}{8}$ x 19 $\frac{1}{4}$ in. (511 x 490 mm.)



\$4,000-6,000

LITERATURE:

Butin 23

Based on a montage of photographs in which the sky motif, taken above the clouds in 1968 during Gerhard Richter's flight to Milan, was turned upside-down.



LOT ESSAY

119 GERHARD RICHTER (B. 1932)

Vermalung (grau) (Inpainting (Grey))

grey oil paint fingerpainted on white synthetic paper, 1971, signed and dated '8.9.71' in pencil and numbered 100/150 on the reverse (from the edition of 150 unique variants, twenty were destroyed, there were also ten in Roman numerals), published by the artist, Germany, the full sheet, in very good condition, framed
Sheet: 15⁵/₈ x 15⁵/₈ in. (398 x 399 mm.)

\$25,000-35,000

LITERATURE:

Butin 45



LOT ESSAY

120 GERHARD RICHTER (B. 1932)

Spiegel (Mirror)



mirrored glass on thin cork board, 1986, signed and dated in ink and numbered 46/100 on the reverse (there were also seventeen in Roman numerals), published by Kunstverein für die Rheinlande und Westfalen, Düsseldorf, Germany, in generally very good condition, framed

Overall: 8¼ x 11¾ in. (210 x 298 mm.)

\$6,000-8,000

LITERATURE:

Butin 61

This mirrored object is not a readymade, but was made according to the artist's specific instructions.



LOT ESSAY

121 GERHARD RICHTER (B. 1932)

Uran (Uranium)



black-and-white photograph, silver gelatin print, 1989, signed and dated (scratched), numbered 39/50 (there were also six in Roman numerals), published by Museum Boijmans Van Beuningen, Rotterdam, the full sheet, a 2½-in. scratch towards the left edge, framed



Sheet: 39¼ x 27½ in. (998 x 699 mm.)

\$20,000-30,000

LITERATURE:

Butin 68



LOT ESSAY

122 GERHARD RICHTER (B. 1932)

Abstraktes Foto (Abstract Photo)



Black-and-white photograph (silver gelatin print) mounted on plastic board with white passe-partout, 1989, signed and dated in ink, numbered 4/50 (there were also seven artist's proofs in Roman numerals), published by Galerie Fred Jahn, Munich, the full sheet, in generally very good condition, framed
Photograph: 19 $\frac{5}{8}$ x 27 $\frac{1}{2}$ in. (500 x 700 mm.)
Overall: 28 $\frac{7}{8}$ x 39 in. (735 x 995 mm.)



\$8,000-12,000

LITERATURE:

Butin 69



LOT ESSAY

123 GERHARD RICHTER (B. 1932)

Guldenstern



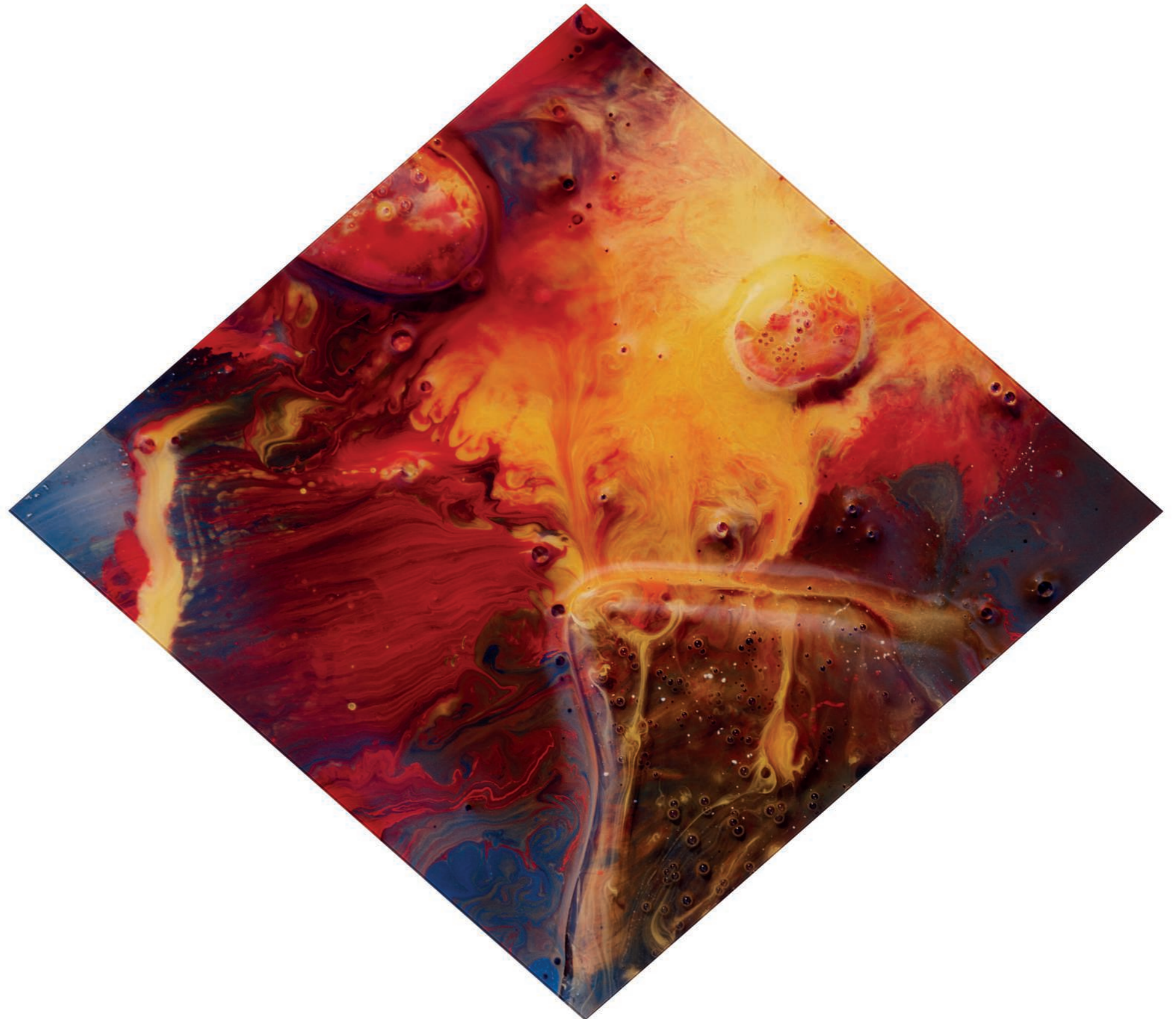
Cibachrome photograph in colors between Plexiglas and Alucobond plates, 1998, signed, dated and numbered 33/35 in ink on the reverse (there were also three artist's proofs), co-published by Anthony d'Offay Gallery and Marian Goodman Gallery, London and New York, with their label on the reverse, in generally very good condition
Overall: 45¾ x 40⅞ in. (1162 x 1020 mm.)



\$20,000-30,000

LITERATURE:

Butin 95



LOT ESSAY

124 GERHARD RICHTER (B. 1932)

Domecke I (Cathedral Corner I)



Cibachrome photograph between Plexiglas plates, 1998, signed in felt-tip pen on the reverse, numbered 14/60 (there were also six artist's proofs in Roman numerals), published by the artist, Cologne, the full sheet, two very minor scratches towards the right edge, otherwise in good condition, framed
Overall: 30 $\frac{5}{8}$ x 21 $\frac{1}{2}$ in. (778 x 546 mm.)



\$10,000-15,000

LITERATURE:

Butin 97

LOT ESSAY



125 RICHARD ESTES (B. 1932)

D-Train

screenprint in colors, on German museum board, 1988, signed in pencil, numbered 16/125 (there were also fifteen artist's proofs), published by Parasol Press, Ltd., New York, with full margins, in very good condition, framed

Image: 35 $\frac{7}{8}$ x 72 $\frac{1}{4}$ in. (911 x 1832 mm.)

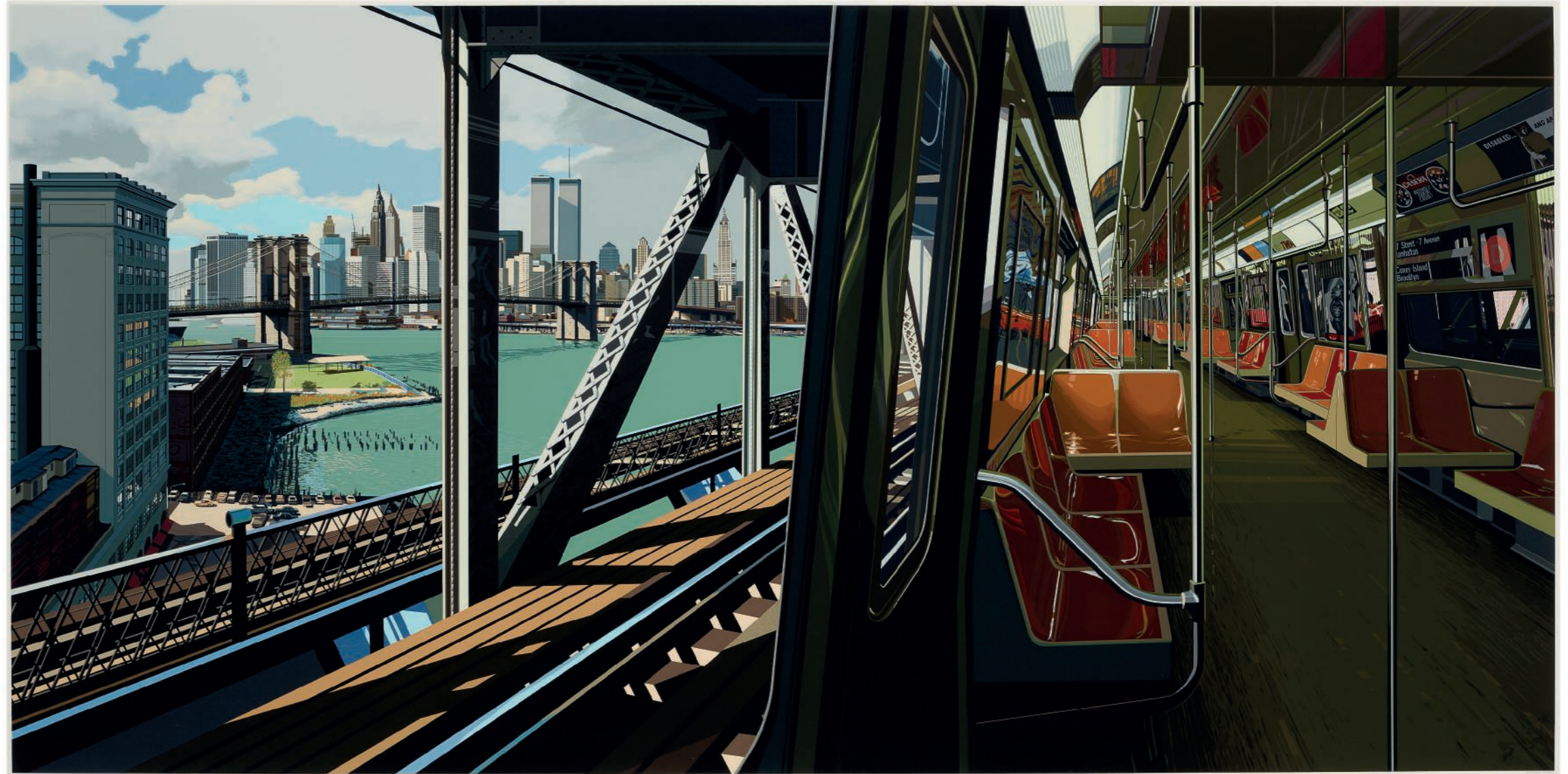
Sheet: 42 x 76 $\frac{7}{8}$ in. (1067 x 1953 mm.)

\$25,000-35,000

LITERATURE:

Arthur p. 128

Characteristic of Richard Estes's photo-derived urban scenes and crystalline naturalism, *D-Train* remains one of the most ambitious prints produced by Richard Estes and the Domberger workshop. Estes' exaggerated panorama depicts the view from a vacant subway car as it passes the Brooklyn Bridge, Pier 17, and the lower Manhattan skyline. With its range of tones, textures, and perspectives, *D Train* pushed the screenprint process to its limits. To facilitate the production of this unusually large print, a special silkscreen press was built in Sweden and then transported to Filderstadt, Germany for proofing and editioning. In order to provide a thick stable ground for the piece, Domberger had three sheets of museum board laminated together. By virtue of its monumental size and compositional complexity, Estes' print imparts drama to the mundane passage of an urban commute.



130 ED RUSCHA (B. 1937)

Sponge Puddle



lithograph in colors, on Rives BFK paper, 2015, signed and dated in pencil, numbered 25/60 (there were also twelve artist's proofs), published by Hamilton Press, California, with their blindstamp, with full margins, in very good condition, framed

Image: 24 x 24 in. (610 x 610 mm.)

Sheet: 29 x 28 in. (737 x 711 mm.)



\$25,000-35,000

I had a notion to make pictures by using words and presenting them in some way and it seemed like a mountain was an archetypal stage set. It was a perfect foil for whatever was happening in the foreground.

—Ed Ruscha



160 KAWS (B.1974)

*LOST TIME, ALONE AGAIN,
FAR FAR DOWN*

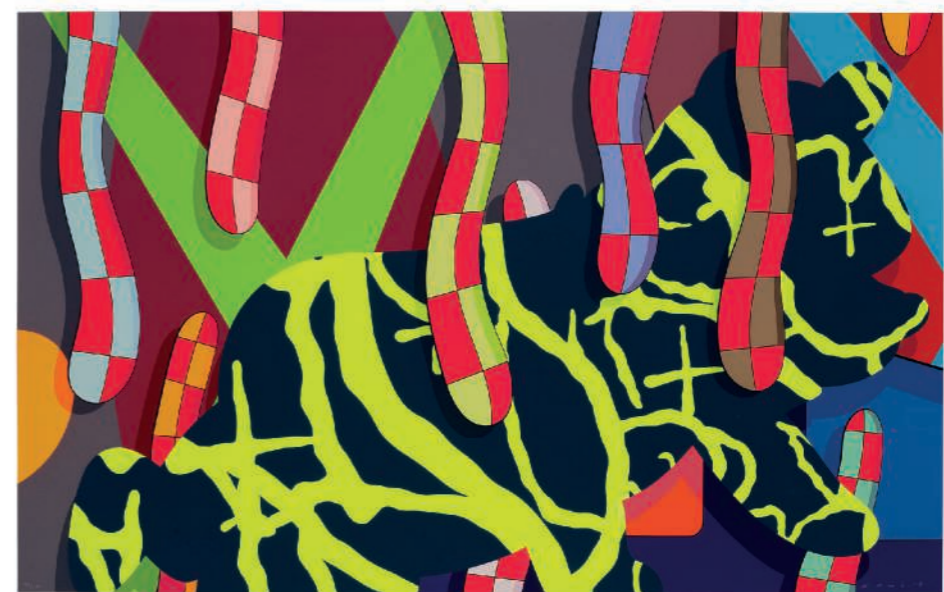


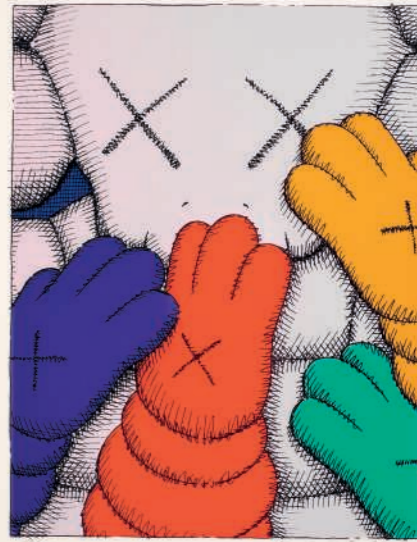
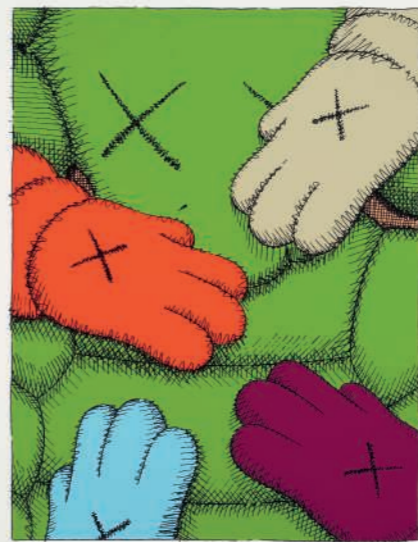
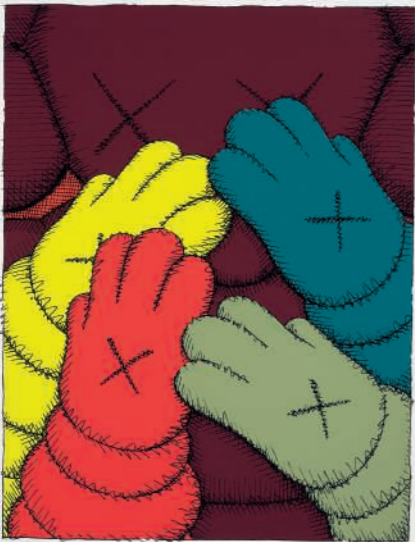
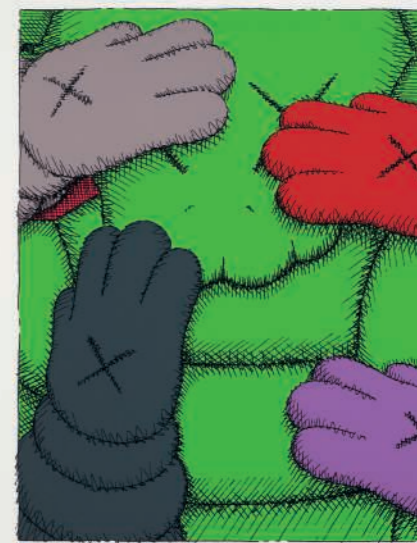
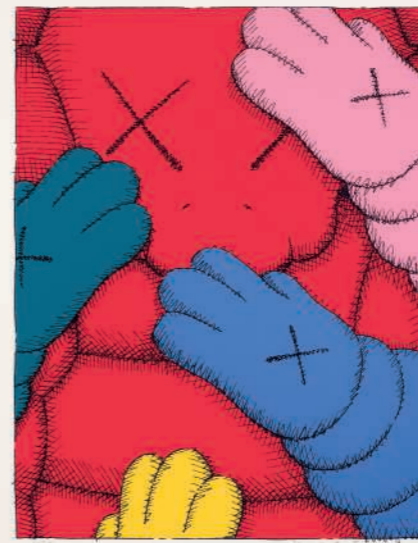
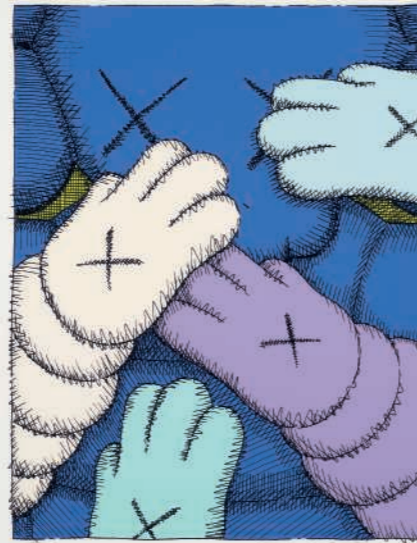
the complete set of three screenprints in colors, on Saunders Waterford paper, 2018, each signed, dated and numbered 40/100 (the first in purple pencil, the second and third in white pencil, there were also twenty artist's proof sets), published by Pace Editions, Inc., New York, each the full sheet, in very good condition, framed



Each Sheet: 32 x 53½ in. (813 x 1350 mm.) (3)

\$60,000-80,000





161 KAWS (B.1974)

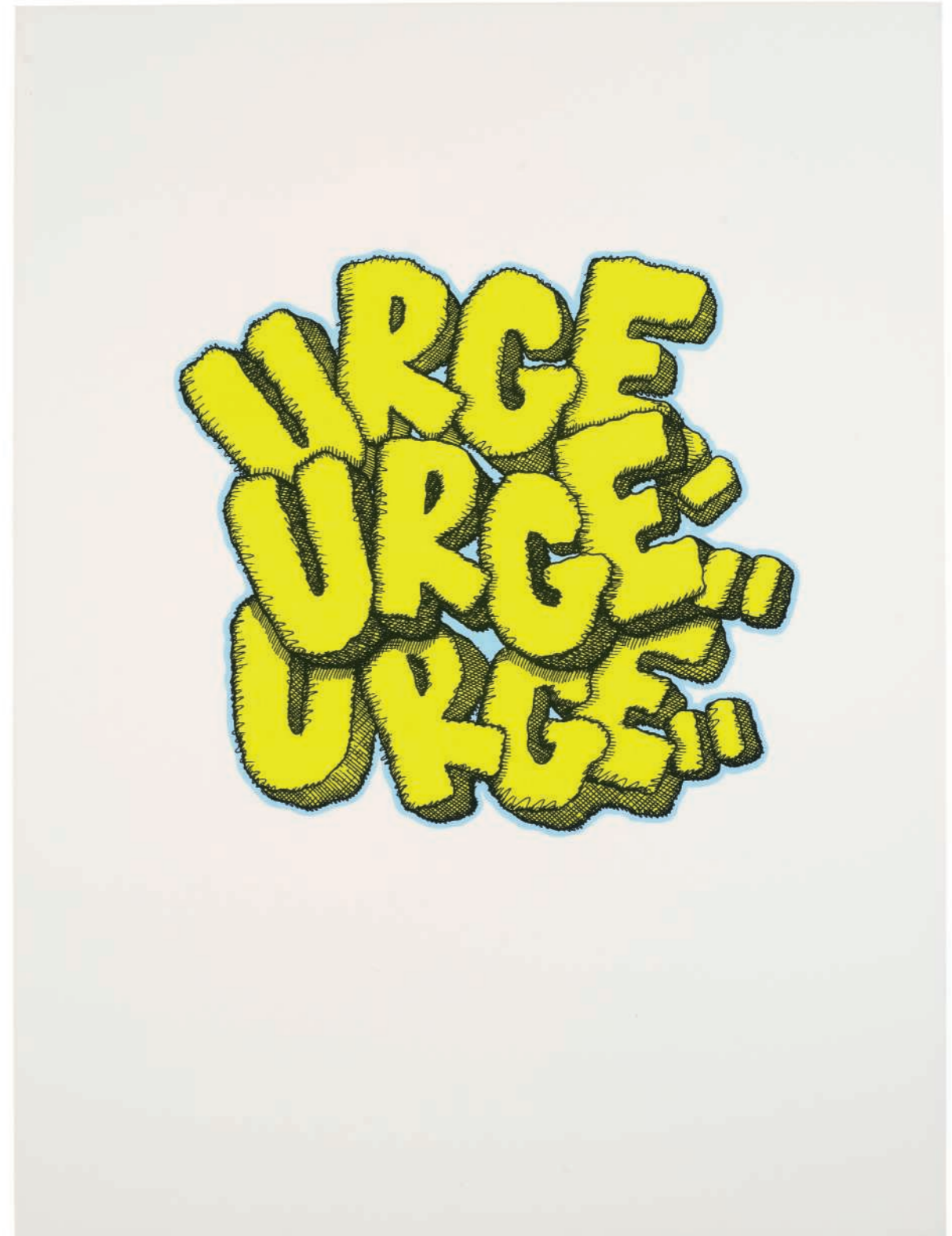
URGE



the complete set of ten screenprints in colors, on Saunders Waterford paper, 2020, each signed and dated in pencil and numbered 112/250 (there were also 50 artist's proof sets), published by the artist, New York, each with full margins, in very good condition, with the title page and blue clamshell portfolio case
Each Image: 11¼ x 8⅝ in. (286 x 220 mm.)
Each Sheet: 17 x 12¾ in. (432 x 324 mm.) (10)



\$40,000-60,000



163 KAWS (B.1974)

ISOLATION TOWER



screenprint in colors, on Saunders Waterford paper, 2016, signed and dated in pencil, numbered 'AP 15/20' (an artist's proof, the edition was 50), published by Pace Prints, Inc., New York

Sheet: 60 x 43 in. (1524 x 1092 mm.)

\$30,000-50,000



Terms and Conditions

CONDITIONS OF SALE • BUYING AT CHRISTIE’S

CONDITIONS OF SALE

These Conditions of Sale and the Important Notices and Explanation of Cataloguing Practice set out the terms on which we offer the **lots** listed in this catalogue for sale. By registering to bid and/or by bidding at auction you agree to these terms, so you should read them carefully before doing so. You will find a glossary at the end explaining the meaning of the words and expressions coloured in **bold**.

Unless we own a **lot** in whole or in part (Δ symbol), Christie’s acts as agent for the seller.

A BEFORE THE SALE

1 DESCRIPTION OF LOTS

- Certain words used in the catalogue description have special meanings. You can find details of these on the page headed “Important Notices and Explanation of Cataloguing Practice” which forms part of these terms. You can find a key to the Symbols found next to certain catalogue entries under the section of the catalogue called “Symbols Used in this Catalogue”.
- Our description of any **lot** in the catalogue, any **condition** report and any other statement made by us (whether orally or in writing) about any **lot**, including about its nature or **condition**, artist, period, materials, approximate dimensions, or **provenance** are our opinion and not to be relied upon as a statement of fact. We do not carry out in-depth research of the sort carried out by professional historians and scholars. All dimensions and weights are approximate only.

2 OUR RESPONSIBILITY FOR OUR DESCRIPTION OF LOTS

We do not provide any guarantee in relation to the nature of a **lot** apart from our **authenticity warranty** contained in paragraph E2 and to the extent provided in paragraph I below.

3 CONDITION

- The **condition** of **lots** sold in our auctions can vary widely due to factors such as age, previous damage, restoration, repair and wear and tear. Their nature means that they will rarely be in perfect **condition**. **Lots** are sold “as is,” in the **condition** they are in at the time of the sale, without any representation or warranty or assumption of liability of any kind as to **condition** by Christie’s or by the seller.
- Any reference to **condition** in a catalogue entry or in a **condition** report will not amount to a full description of condition, and images may not show a **lot** clearly. Colours and shades may look different in print or on screen to how they look on physical inspection. **Condition** reports may be available to help you evaluate the **condition** of a **lot**. **Condition** reports are provided free of charge as a convenience to our buyers and are for guidance only. They offer our opinion but they may not refer to all faults, inherent defects, restoration, alteration or adaptation because our staff are not professional restorers or conservators. For that reason **condition** reports are not an alternative to examining a **lot** in person or seeking your own professional advice. It is your responsibility to ensure that you have requested, received and considered any **condition** report.

4 VIEWING LOTS PRE-AUCTION

- If you are planning to bid on a **lot**, you should inspect it personally or through a knowledgeable representative before you make a bid to make sure that you accept the description and its **condition**. We recommend you get your own advice from a restorer or other professional adviser.
- Pre-auction viewings are open to the public free of charge. Our specialists may be available to answer questions at pre-auction viewings or by appointment.

5 ESTIMATES

Estimates are based on the **condition**, rarity, quality and **provenance** of the **lots** and on prices recently paid at auction for similar property. **Estimates** can change. Neither you, nor anyone else, may rely on any **estimates** as a prediction or guarantee of the actual selling price of a **lot** or its value for any other purpose. **Estimates** do not include the **buyer’s premium** or any applicable taxes.

6 WITHDRAWAL

Christie’s may, at its option, withdraw any **lot** from auction at any time prior to or during the sale of the **lot**. Christie’s has no liability to you for any decision to withdraw.

7 JEWELLERY

- Coloured gemstones (such as rubies, sapphires and emeralds) may have been treated to improve their look, through methods such as heating and oiling. These methods are accepted by the international jewellery trade but may make the gemstone less strong and/or require special care over time.
- All types of gemstones may have been improved by some method. You may request a gemmological report for any item which does not have a report if the request is made to us at least three weeks before the date of the auction and you pay the fee for the report.
- We do not obtain a gemmological report for every gemstone sold in our auctions. Where we do get gemmological reports from internationally accepted gemmological laboratories, such reports will be described in the catalogue. Reports from American gemmological laboratories will describe any improvement or treatment to the gemstone. Reports from European gemmological laboratories will describe any improvement or treatment only if we request that they do so, but will confirm when no improvement or treatment has been made. Because of differences in approach and technology, laboratories may not agree whether a particular gemstone has been treated, the amount of treatment, or whether treatment is permanent. The gemmological laboratories will only report on the improvements or treatments known to the laboratories at the date of the report.
- For jewellery sales, **estimates** are based on the information in any gemmological report. If no report is available, assume that the gemstones may have been treated or enhanced.

8 WATCHES & CLOCKS

- Almost all clocks and watches are repaired in their lifetime and may include parts which are not original. We do not give a **warranty** that any individual component part of any watch is **authentic**. Watchbands described as “associated” are not part of the original watch and may not be **authentic**. Clocks may be sold without pendulums, weights or keys.
- As collectors’ watches often have very fine and complex mechanisms, you are responsible for any general service, change of battery, or further repair work that may be necessary. We do not give a **warranty** that any watch is in good working order. Certificates are not available unless described in the catalogue.
- Most wristwatches have been opened to find out the type and quality of movement. For that reason, wristwatches with water resistant cases may not be waterproof and we recommend you have them checked by a competent watchmaker before use. Important information about the sale, transport and shipping of watches and watchbands can be found in paragraph H2(f).

B REGISTERING TO BID

1 NEW BIDDERS

- If this is your first time bidding at Christie’s or you are a returning bidder who has not bought anything from any of our salerooms within the last two years you must register at least 48 hours before an auction begins to give us enough time to process and approve your registration. We may, at our option, decline to permit you to register as a bidder. You will be asked for the following:
 - for individuals: Photo identification (driver’s licence, national identity card, or passport) and, if not shown on the ID document, proof of your current address (for example, a current utility bill or bank statement);
 - for corporate clients: Your Certificate of Incorporation or equivalent document(s) showing your name and registered address together with documentary proof of directors and beneficial owners; and
 - for trusts, partnerships, offshore companies and other business structures, please contact us in advance to discuss our requirements.

- We may also ask you to give us a financial reference and/or a deposit as a condition of allowing you to bid. For help, please contact our Client Services Department at **+1 212-636-2000**.

2 RETURNING BIDDERS

As described in paragraph B(1) above, we may at our option ask you for current identification, a financial reference, or a deposit as a condition of allowing you to bid. If you have not bought anything from any of our salerooms within the last two years or if you want to spend more than on previous occasions, please contact our Client Services Department at **+1 212-636-2000**.

3 IF YOU FAIL TO PROVIDE THE RIGHT DOCUMENTS

If in our opinion you do not satisfy our bidder identification and registration procedures including, but not limited to completing any anti-money laundering and/or anti-terrorism financing checks we may require to our satisfaction, we may refuse to register you to bid, and if you make a successful bid, we may cancel the contract for sale between you and the seller.

4 BIDDING ON BEHALF OF ANOTHER PERSON

If you are bidding on behalf of another person, that person will need to complete the registration requirements above before you can bid, and supply a signed letter authorising you to bid for him/her. A bidder accepts personal liability to pay the **purchase price** and all other sums due unless it has been agreed in writing with Christie’s, before commencement of the auction, that the bidder is acting as an agent on behalf of a named third party acceptable to Christie’s and that Christie’s will only seek payment from the named third party.

5 BIDDING IN PERSON

If you wish to bid in the saleroom you must register for a numbered bidding paddle at least 30 minutes before the auction. You may register online at **www.christies.com** or in person. For help, please contact the Client Service Department on **+1 212-636-2000**.

6 BIDDING SERVICES

The bidding services described below are a free service offered as a convenience to our clients and Christie’s is not responsible for any error (human or otherwise), omission, or breakdown in providing these services.

(a) Phone Bids

Your request for this service must be made no later than 24 hours prior to the auction. We will accept bids by telephone for **lots** only if our staff are available to take the bids. If you need to bid in a language other than in English, you must arrange this well before the auction. We may record telephone bids. By bidding on the telephone, you are agreeing to us recording your conversations. You also agree that your telephone bids are governed by these Conditions of Sale.

(b) Internet Bids on Christie’s LIVE™

For certain auctions we will accept bids over the Internet. For more information, please visit <https://www.christies.com/buying-services/buying-guide/register-and-bid/>. As well as these Conditions of Sale, internet bids are governed by the Christie’s LIVE™ Terms of Use which are available on <https://www.christies.com/LiveBidding/OnlineTermsOfUse.aspx>.

(c) Written Bids

You can find a Written Bid Form at the back of our catalogues, at any Christie’s office, or by choosing the sale and viewing the **lots** online at **www.christies.com**. We must receive your completed Written Bid Form at least 24 hours before the auction. Bids must be placed in the currency of the saleroom. The **auctioneer** will take reasonable steps to carry out written bids at the lowest possible price, taking into account the **reserve**. If you make a written bid on a **lot** which does not have a **reserve** and there is no higher bid than yours, we will bid on your behalf at around 50% of the **low estimate** or, if lower, the amount of your bid. If we receive written bids

on a **lot** for identical amounts, and at the auction these are the highest bids on the **lot**, we will sell the **lot** to the bidder whose written bid we received first.

C CONDUCTING THE SALE

1 WHO CAN ENTER THE AUCTION

We may, at our option, refuse admission to our premises or decline to permit participation in any auction or to reject any bid.

2 RESERVES

Unless otherwise indicated, all **lots** are subject to a **reserve**. We identify **lots** that are offered without **reserve** with the symbol Δ next to the **lot number**. The **reserve** cannot be more than the **lot’s low estimate**.

3 AUCTIONEER’S DISCRETION

The **auctioneer** can at his or her sole option:

- refuse any bid;
- move the bidding backwards or forwards in any way he or she may decide, or change the order of the **lots**;
- withdraw any **lot**;
- divide any **lot** or combine any two or more **lots**;
- reopen or continue the bidding even after the hammer has fallen; and
- in the case of error or dispute related to bidding and whether during or after the auction, continue the bidding, determine the successful bidder, cancel the sale of the **lot**, or reoffer and resell any **lot**. If you believe that the **auctioneer** has accepted the successful bid in error, you must provide a written notice detailing your claim within 3 business days of the date of the auction. The **auctioneer** will consider such claim in good faith. If the **auctioneer**, in the exercise of his or her discretion under this paragraph, decides after the auction is complete, to cancel the sale of a **lot**, or reoffer and resell a **lot**, he or she will notify the successful bidder no later than by the end of the 7th calendar day following the date of the auction. The **auctioneer’s** decision in exercise of this discretion is final. This paragraph does not in any way prejudice Christie’s ability to cancel the sale of a **lot** under any other applicable provision of these Conditions of Sale, including the rights of cancellation set forth in sections B(3), E(2)(i), F(4), and J(1).

4 BIDDING

The **auctioneer** accepts bids from:

- bidders in the saleroom;
- telephone bidders;
- internet bidders through ‘Christie’s LIVE™’ (as shown above in paragraph B6); and
- written bids (also known as absentee bids or commission bids) left with us by a bidder before the auction.

5 BIDDING ON BEHALF OF THE SELLER

The **auctioneer** may, at his or her sole option, bid on behalf of the seller up to but not including the amount of the **reserve** either by making consecutive bids or by making bids in response to other bidders. The **auctioneer** will not identify these as bids made on behalf of the seller and will not make any bid on behalf of the seller at or above the **reserve**. If **lots** are offered without **reserve**, the **auctioneer** will generally decide to open the bidding at 50% of the **low estimate** for the **lot**. If no bid is made at that level, the **auctioneer** may decide to go backwards at his or her sole option until a bid is made, and then continue up from that amount. In the event that there are no bids on a **lot**, the **auctioneer** may deem such **lot** unsold.

6 BID INCREMENTS

Bidding generally starts below the **low estimate** and increases in steps (bid increments). The **auctioneer** will decide at his or her sole option where the bidding should start and the bid increments. The usual bid increments are shown for guidance only on the Written Bid Form at the back of this catalogue.

7 CURRENCY CONVERTER

The saleroom video screens (and Christie’s LIVE™) may show bids in some other major currencies as well as US dollars. Any conversion is for guidance only and we cannot be bound by any rate of exchange used. Christie’s is not responsible for any error (human or otherwise), omission or breakdown in providing these services.

8 SUCCESSFUL BIDS

Unless the **auctioneer** decides to use his or her discretion as set out in paragraph C3 above, when the **auctioneer’s** hammer strikes, we have accepted the last bid. This means a contract for sale has been formed between the seller and the successful bidder. We will issue an invoice only to the registered bidder who made the successful bid. While we send out invoices by mail and/or email after the auction, we do not accept responsibility for telling you whether or not your bid was successful. If you have bid by written bid, you should contact us by telephone or in person as soon as possible after the auction to get details of the outcome of your bid to avoid having to pay unnecessary storage charges.

9 LOCAL BIDDING LAWS

You agree that when bidding in any of our sales that you will strictly comply with all local laws and regulations in force at the time of the sale for the relevant sale site.

D THE BUYER’S PREMIUM AND TAXES

1 THE BUYER’S PREMIUM

In addition to the **hammer price**, the successful bidder agrees to pay us a **buyer’s premium** on the hammer price of each **lot** sold. On all **lots** we charge 25% of the **hammer price** up to and including US\$600,000, 20% on that part of the **hammer price** over US\$600,000 and up to and including US\$6,000,000, and 14.5% of that part of the **hammer price** above US\$6,000,000.

2 TAXES

The successful bidder is responsible for any applicable taxes including any sales or use tax or equivalent tax wherever such taxes may arise on the **hammer price**, the **buyer’s premium**, and/or any other charges related to the **lot**. For **lots** Christie’s ships to or within the United States, a sales or use tax may be due on the **hammer price**, **buyer’s premium**, and/or any other charges related to the **lot**, regardless of the nationality or citizenship of the successful bidder. Christie’s will collect sales tax where legally required. The applicable sales tax rate will be determined based upon the state, county, or locale to which the **lot** will be shipped. Christie’s shall collect New York sales tax at a rate of 8.875% for any **lot** collected from Christie’s in New York. In accordance with New York law, if Christie’s arranges the shipment of a **lot** out of New York State, New York sales tax does not apply, although sales tax or other applicable taxes for other states may apply. If you hire a shipper (other than a common carrier authorized by Christie’s), to collect the **lot** from a Christie’s New York location, Christie’s must collect New York sales tax on the **lot** at a rate of 8.875% regardless of the ultimate destination of the **lot**.

If Christie’s delivers the **lot** to, or the **lot** is collected by, any framer, restorer or other similar service provider in New York that you have hired, New York law considers the **lot** delivered to the successful bidder in New York and New York sales tax must be imposed regardless of the ultimate destination of the **lot**. In this circumstance, New York sales tax will apply to the **lot** even if Christie’s or a common carrier (authorized by Christie’s that you hire) subsequently delivers the **lot** outside New York. Successful bidders claiming an exemption from sales tax must provide appropriate documentation to Christie’s prior to the release of the **lot** or within 90 days after the sale, whichever is earlier. For shipments to those states for which Christie’s is not required to collect sales tax, a successful bidder may have a use or similar tax obligation. *It is the successful bidder’s responsibility to pay all taxes due*. Christie’s recommends you consult your own independent tax advisor with any questions.

E WARRANTIES

1 SELLER’S WARRANTIES

- For each **lot**, the seller gives a **warranty** that the seller:
- is the owner of the **lot** or a joint owner of the **lot** acting with the permission of the other co-owners or, if the seller is not the owner or a joint owner of the **lot**, has the permission of the owner to sell the **lot**, or the right to do so in law; and

- has the right to transfer ownership of the **lot** to the buyer without any restrictions or claims by anyone else.

If either of the above **warranties** are incorrect, the seller shall not have to pay more than the **purchase price** (as defined in paragraph F1(a) below) paid by you to us. The seller will not be responsible to you for any reason for loss of profits or business, expected savings, loss of opportunity or interest, costs, damages, **other damages** or expenses. The seller gives no **warranty** in relation to any **lot** other than as set out above and, as far as the seller is allowed by law, all **warranties** from the seller to you, and all other obligations upon the seller which may be added to this agreement by law, are excluded.

2 OUR AUTHENTICITY WARRANTY

We warrant, subject to the terms below, that the **lots** in our sales are **authentic** (our “**authenticity warranty**”). If, within 5 years of the date of the auction, you give notice to us that your **lot** is not **authentic**, subject to the terms below, we will refund the **purchase price** paid by you. The meaning of **authentic** can be found in the glossary at the end of these Conditions of Sale. The terms of the **authenticity warranty** are as follows:

- It will be honored for claims notified within a period of 5 years from the date of the auction. After such time, we will not be obligated to honor the **authenticity warranty**.
- It is given only for information shown in **UPPERCASE type** in the first line of the **catalogue description** (the “**Heading**”). It does not apply to any information other than in the **Heading** even if shown in **UPPERCASE type**.
- The **authenticity warranty** does not apply to any **Heading** or part of a **Heading** which is **qualified**. **Qualified** means limited by a clarification in a **lot’s catalogue description** or by the use in a **Heading** of one of the terms listed in the section titled **Qualified Headings** on the page of the catalogue headed “Important Notices and Explanation of Cataloguing Practice”. For example, use of the term “ATTRIBUTED TO…” in a **Heading** means that the **lot** is in Christie’s opinion probably a work by the named artist but no **warranty** is provided that the **lot** is the work of the named artist. Please read the full list of **Qualified Headings** and a **lot’s** full **catalogue description** before bidding.
- The **authenticity warranty** applies to the **Heading** as amended by any **Saleroom Notice**.
- The **authenticity warranty** does not apply where scholarship has developed since the auction leading to a change in generally accepted opinion. Further, it does not apply if the **Heading** either matched the generally accepted opinion of experts at the date of the auction or drew attention to any conflict of opinion.
- The **authenticity warranty** does not apply if the **lot** can only be shown not to be **authentic** by a scientific process which, on the date we published the catalogue, was not available or generally accepted for use, or which was unreasonably expensive or impractical, or which was likely to have damaged the **lot**.
- The benefit of the **authenticity warranty** is only available to the original buyer shown on the invoice for the **lot** issued at the time of the sale and only if on the date of the notice of claim, the original buyer is the full owner of the **lot** and the **lot** is free from any claim, interest or restriction by anyone else. The benefit of this **authenticity warranty** may not be transferred to anyone else.
- In order to claim under the **authenticity warranty** you must:
 - give us written notice of your claim within 5 years of the date of the auction. We may require full details and supporting evidence of any such claim;
 - at Christie’s option, we may require you to provide the written opinions of two recognised experts in the field of the **lot** mutually agreed by you and us in advance confirming that the **lot** is not **authentic**. If we have any doubts, we reserve the right to obtain additional opinions at our expense; and
 - return the **lot** at your expense to the saleroom from which you bought it in the **condition** it was in at the time of sale.

(i) Your only right under this **authenticity warranty** is to cancel the sale and receive a refund of the **purchase price** paid by you to us. We will not, under any circumstances, be required to pay you more than the **purchase price** nor will we be liable for any loss of profits or business, loss of opportunity or value, expected savings or interest, costs, damages, **other damages** or expenses.

(j) **Books.** Where the **lot** is a book, we give an **additional warranty** for 21 days from the date of the auction that any **lot** is defective in text or illustration, that we will refund your **purchase price**, subject to the following terms:

- This additional **warranty** does not apply to:
 - the absence of blanks, half titles, tissue guards or advertisements, damage in respect of bindings, stains, spotting, marginal tears or other defects not affecting completeness of the text or illustration;
 - drawings, autographs, letters or manuscripts, signed photographs, music, atlases, maps or periodicals;
 - books not identified by title;
 - lots** sold without a printed **estimate**;
 - books which are described in the catalogue as sold not subject to return; or
 - defects stated in any **condition** report or announced at the time of sale.
- To make a claim under this paragraph you must give written details of the defect and return the **lot** to the sale room at which you bought it in the same **condition** as at the time of sale, within 21 days of the date of the sale.

(k) **South East Asian Modern and Contemporary Art and Chinese Calligraphy and Painting.** In these categories, the **authenticity warranty** does not apply because current scholarship does not permit the making of definitive statements. Christie’s does, however, agree to cancel a sale in either of these two categories of art where it has been proven the **lot** is a forgery. Christie’s will refund to the original buyer the **purchase price** in accordance with the terms of Christie’s Authenticity Warranty, provided that the original buyer notifies us with full supporting evidence documenting the forgery claim within twelve (12) months of the date of the auction. Such evidence must be satisfactory to us that the property is a forgery in accordance with paragraph E2(h)(ii) above and the property must be returned to us in accordance with E2h(iii) above. Paragraphs E2(b), (c), (d), (e), (f) and (g) and (i) also apply to a claim under these categories.

(l) **Chinese, Japanese and Korean artefacts (excluding Chinese, Japanese and Korean calligraphy, paintings, prints, drawings and jewellery).** In these categories, paragraph E2 (b) – (e) above shall be amended so that where no maker or artist is identified, the **authenticity warranty** is given not only for the **Heading** but also for information regarding date or period shown in **UPPERCASE type** in the second line of the **catalogue description** (the “**Subheading**”). Accordingly, all references to the **Heading** in paragraph E2 (b) – (e) above shall be read as references to both the **Heading** and the **Subheading**.

3 NO IMPLIED WARRANTIES

EXCEPT AS SET FORTH IN PARAGRAPHS E1 AND E2 ABOVE, NEITHER THE SELLER NOR THE CHRISTIE’S GROUP MAKE ANY OTHER WARRANTY, EXPRESS OR IMPLIED, ORAL OR WRITTEN, WITH RESPECT TO THE LOT, INCLUDING THE IMPLIED WARRANTIES OF MERCHANTABILITY OR FITNESS FOR A PARTICULAR PURPOSE, EACH OF WHICH IS SPECIFICALLY DISCLAIMED.

4 YOUR WARRANTIES

- You warrant that the funds used for settlement are not connected with any criminal activity, including tax evasion, and you are neither under investigation, nor have you been charged with or convicted of money laundering, terrorist activities or other crimes.
- where you are bidding on behalf of another person, you warrant that:
 - you have conducted appropriate customer due diligence on the ultimate buyer(s) of the **lot(s)** in accordance with all applicable anti-money laundering and sanctions laws, consent to us relying on this due diligence, and you will retain for a period of not less than 5 years the documentation evidencing

the due diligence. You will make such documentation promptly available for immediate inspection by an independent third-party auditor upon our written request to do so;

- the arrangements between you and the ultimate buyer(s) in relation to the **lot** or otherwise do not, in whole or in part, facilitate tax crimes;
- you do not know, and have no reason to suspect, that the funds used for settlement are connected with, the proceeds of any criminal activity, including tax evasion, or that the ultimate buyer(s) are under investigation, or have been charged with or convicted of money laundering, terrorist activities or other crimes.

F PAYMENT

1 HOW TO PAY

- Immediately following the auction, you must pay the **purchase price** being:
 - the **hammer price**; and
 - the **buyer’s premium**; and
 - any applicable duties, goods, sales, use, compensating or service tax, or VAT.

Payment is due no later than by the end of the 7th calendar day following the date of the auction (the “**due date**”).

(b) We will only accept payment from the registered bidder. Once issued, we cannot change the buyer’s name on an invoice or re-issue the invoice in a different name. You must pay immediately even if you want to export the **lot** and you need an export licence.

(c) You must pay for **lots** bought at Christie’s in the United States in the currency stated on the invoice in one of the following ways:

- Wire transfer
JP Morgan Chase Bank, N.A.,
270 Park Avenue, New York, NY 10017;
ABA# 021000021; FBO: Christie’s Inc.;
Account # 957-107978,
for international transfers, SWIFT:
CHASUS33.
- Credit Card.
We accept Visa, MasterCard, American Express and China Union Pay. Credit card payments at the New York premises will only be accepted for New York sales. Christie’s will not accept credit card payments for purchases in any other sale site.

(iii) Cash
We accept cash payments (including money orders and traveller’s checks) subject to a maximum global aggregate of US\$7,500 per buyer.

(iv) Bank Checks
You must make these payable to Christie’s Inc. and there may be conditions. Once we have deposited your check, property cannot be released until five business days have passed.

(v) Checks
You must make checks payable to Christie’s Inc. and they must be drawn from US dollar accounts from a US bank.

(d) You must quote the sale number, your invoice number and client number when making a payment. All payments sent by post must be sent to:
Christie’s Inc. Post-Sale Services,
20 Rockefeller Center, New York, NY 10020.

(e) For more information please contact our Post-Sale Services by phone at +1 212 636 2650 or fax at +1 212 636 4939 or email PostSaleUS@christies.com.

2 TRANSFERRING OWNERSHIP TO YOU

You will not own the **lot** and ownership of the **lot** will not pass to you until we have received full and clear payment of the **purchase price**, even in circumstances where we have released the **lot** to you.

3 TRANSFERRING RISK TO YOU

The risk in and responsibility for the **lot** will transfer to you from whichever is the earlier of the following:

- When you collect the **lot**; or
- At the end of the 30th day following the date of the auction or, if earlier, the date the **lot** is taken into care by a third party warehouse as set out on the page headed ‘Storage and Collection’, unless we have agreed otherwise with you.

4 WHAT HAPPENS IF YOU DO NOT PAY

- If you fail to pay us the **purchase price** in full by the **due date**, we will be entitled to do one or more of the following (as well as enforce our rights under paragraph F5 and any other rights or remedies we have by law):
 - we can charge interest from the **due date** at a rate of up to 1.34% per month on the unpaid amount due;
 - we can cancel the sale of the **lot**. If we do this, we may sell the **lot** again, publically or privately on such terms we shall think necessary or appropriate, in which case you must pay us any shortfall between the **purchase price** and the proceeds from the resale. You must also pay all costs, expenses, losses, damages and legal fees we have to pay or may suffer and any shortfall in the seller’s commission on the resale;
 - we can pay the seller an amount up to the net proceeds payable in respect of the amount bid by your default in which case you acknowledge and understand that Christie’s will have all of the rights of the seller to pursue you for such amounts;
 - we can hold you legally responsible for the **purchase price** and may begin legal proceedings to recover it together with other losses, interest, legal fees and costs as far as we are allowed by law;
 - we can take what you owe us from any amounts which we or any company in the **Christie’s Group** may owe you (including any deposit or other part-payment which you have paid to us);
 - we can, at our option, reveal your identity and contact details to the seller;
 - we can reject at any future auction any bids made by or on behalf of the buyer or to obtain a deposit from the buyer before accepting any bids;
 - we can exercise all the rights and remedies of a person holding security over any property in our possession owned by you, whether by way of pledge, security interest or in any other way as permitted by the law of the place where such property is located. You will be deemed to have granted such security to us and we may retain such property as collateral security for your obligations to us; and
 - we can take any other action we see necessary or appropriate.

(b) If you owe money to us or to another **Christie’s Group** company, we can use any amount you do pay, including any deposit or other part-payment you have made to us, or which we owe you, to pay off any amount you owe to us or another **Christie’s Group** company for any transaction.

(c) If you owe money to us or to another **Christie’s Group** company, as well as the rights set out in F4 above, we can use or deal with any of your property we hold or which is held by another **Christie’s Group** company in any way we are allowed to by law. We will only release your property to you after you pay us or the relevant **Christie’s Group** company in full for what you owe. However, if we choose, we can also sell your property in any way we think appropriate. We will use the proceeds of the sale against any amounts you owe us and we will pay any amount left from that sale to you. If there is a shortfall, you must pay us any difference between the amount we have received from the sale and the amount you owe us.

(d) If you owe money to us or to another **Christie’s Group** company, as well as the rights set out in F4 above, we can use or deal with any of your property we hold or which is held by another **Christie’s Group** company in any way we are allowed to by law. We will only release your property to you after you pay us or the relevant **Christie’s Group** company in full for what you owe. However, if we choose, we can also sell your property in any way we think appropriate. We will use the proceeds of the sale against any amounts you owe us and we will pay any amount left from that sale to you. If there is a shortfall, you must pay us any difference between the amount we have received from the sale and the amount you owe us.

(e) If you owe money to us or to another **Christie’s Group** company, as well as the rights set out in F4 above, we can use or deal with any of your property we hold or which is held by another **Christie’s Group** company in any way we are allowed to by law. We will only release your property to you after you pay us or the relevant **Christie’s Group** company in full for what you owe. However, if we choose, we can also sell your property in any way we think appropriate. We will use the proceeds of the sale against any amounts you owe us and we will pay any amount left from that sale to you. If there is a shortfall, you must pay us any difference between the amount we have received from the sale and the amount you owe us.

5 KEEPING YOUR PROPERTY

If you owe money to us or to another **Christie’s Group** company, as well as the rights set out in F4 above, we can use or deal with any of your property we hold or which is held by another **Christie’s Group** company in any way we are allowed to by law. We will only release your property to you after you pay us or the relevant **Christie’s Group** company in full for what you owe. However, if we choose, we can also sell your property in any way we think appropriate. We will use the proceeds of the sale against any amounts you owe us and we will pay any amount left from that sale to you. If there is a shortfall, you must pay us any difference between the amount we have received from the sale and the amount you owe us.

G COLLECTION AND STORAGE

- You must collect purchased **lots** within seven days from the auction (**but note that lots will not be released to you until you have made full and clear payment of all amounts due to us**).
- Information on collecting **lots** is set out on the storage and collection page and on an information sheet which you can get from the bidder registration staff or Christie’s Post-Sale Services Department on +1 212 636 2650.
- If you do not collect any **lot** within thirty days following the auction we may, at our option
 - charge you storage costs at the rates set out at www.christies.com/storage.
 - move the **lot** to another Christie’s location or an affiliate or third party warehouse and charge you transport costs and administration

fees for doing so and you will be subject to the third party storage warehouse’s standard terms and to pay for their standard fees and costs.

- sell the **lot** in any commercially reasonable way we think appropriate.
- The Storage conditions which can be found at www.christies.com/storage will apply.
- In accordance with New York law, if you have paid for the **lot** in full but you do not collect the **lot** within 180 calendar days of payment, we may charge you New York sales tax for the **lot**.
- Nothing in this paragraph is intended to limit our rights under paragraph F4.

H TRANSPORT AND SHIPPING

1 SHIPPING
We would be happy to assist in making shipping arrangements on request. You must make all transport and shipping arrangements. However, we can arrange to pack, transport, and ship your property if you ask us to and pay the costs of doing so. We recommend that you ask us for an estimate, especially for any large items or items of high value that need professional packing. We may also suggest other handlers, packers, transporters, or experts if you ask us to do so. For more information, please contact Christie’s Post-Sale Services at +1 212 636 2650. See the information set out at <https://www.christies.com/buying-services/buying-guide/ship/> or contact us at PostSaleUS@christies.com. We will take reasonable care when we are handling, packing, transporting, and shipping a lot. However, if we recommend another company for any of these purposes, we are not responsible for their acts, failure to act, or neglect.

2 EXPORT AND IMPORT

Any **lot** sold at auction may be affected by laws on exports from the country in which it is sold and the import restrictions of other countries. Many countries require a declaration of export for property leaving the country and/or an import declaration on entry of property into the country. Local laws may prevent you from importing a **lot** or may prevent you selling a **lot** in the country you import it into.

- You alone are responsible for getting advice about and meeting the requirements of any laws or regulations which apply to exporting or importing any **lot** prior to bidding. If you are refused a licence or there is a delay in getting one, you must still pay us in full for the **lot**. We may be able to help you apply for the appropriate licences if you ask us to and pay our fee for doing so. However, we cannot guarantee that you will get one. For more information, please contact Christie’s Post-Sale Services Department at +1 212 636 2650 and PostSaleUS@christies.com. See the information set out at <https://www.christies.com/buying-services/buying-guide/ship/> or contact us at PostSaleUS@christies.com.
- You alone are responsible for any applicable taxes, tariffs or other government-imposed charges relating to the export or import of the **lot**. If Christie’s exports or imports the **lot** on your behalf, and if Christie’s pays these applicable taxes, tariffs or other government-imposed charges, you agree to refund that amount to Christie’s.
- Endangered and protected species**
Lots made of or including (regardless of the percentage) endangered and other protected species of wildlife are marked with the symbol **W** in the catalogue. This material includes, among other things, ivory, tortoiseshell, crocodile skin, rhinoceros horn, whalebone certain species of coral, and Brazilian rosewood. You should check the relevant customs laws and regulations before bidding on any **lot** containing wildlife material if you plan to import the **lot** into another country. Several countries refuse to allow you to import property containing these materials, and some other countries require a licence from the relevant regulatory agencies in the countries of exportation as well as importation. In some cases, the **lot** can only be shipped with an independent scientific confirmation of species and/or age, and you will need to obtain these at your own cost.

(b) **Lots containing Ivory or materials resembling ivory**
If a **lot** contains elephant ivory, or any other

wildlife material that could be confused with elephant ivory (for example, mammoth ivory, walrus ivory, helmeted hornbill ivory) you may be prevented from exporting the **lot** from the US or shipping it between US States without first confirming its species by way of a rigorous scientific test acceptable to the applicable Fish and Wildlife authorities. You will buy that **lot** at your own risk and be responsible for any scientific test or other reports required for export from the USA or between US States at your own cost. We will not be obliged to cancel your purchase and refund the **purchase price** if your **lot** may not be exported, imported or shipped between US States, or it is seized for any reason by a government authority. It is your responsibility to determine and satisfy the requirements of any applicable laws or regulations relating to interstate shipping, export or import of property containing such protected or regulated material.

(c) **Lots of Iranian origin**
Some countries prohibit or restrict the purchase, the export and/or import of Iranian-origin “works of conventional craftsmanship” (works that are not by a recognized artist and/or that have a function, (for example: carpets, bowls, ewers, tiles, ornamental boxes). For example, the USA prohibits the import and export of this type of property without a license issued by the US Department of the Treasury, Office of Foreign Assets Control. Other countries, such as Canada, only permit the import of this property in certain circumstances. As a convenience to buyers, Christie’s indicates under the title of a **lot** if the **lot** originates from Iran (Persia). It is your responsibility to ensure you do not bid on or import a **lot** in contravention of the sanctions or trade embargoes that apply to you.

(f) **Gold**
Gold of less than 18ct does not qualify in all countries as ‘gold’ and may be refused import into those countries as ‘gold’.

(g) **Watches**
Many of the watches offered for sale in this catalogue are pictured with straps made of endangered or protected animal materials such as alligator or crocodile. These **lots** are marked with the symbol **Y** in the catalogue. These endangered species straps are shown for display purposes only and are not for sale. Christie’s will remove and retain the strap prior to shipment from the sale site. At some sale sites, Christie’s may, at its discretion, make the displayed endangered species strap available to the buyer of the **lot** free of charge if collected in person from the sale site within 1 year of the date of the auction. Please check with the department for details on a particular **lot**.

For all symbols and other markings referred to in paragraph H2, please note that **lots** are marked as a convenience to you, but we do not accept liability for errors or for failing to mark **lots**.

I OUR LIABILITY TO YOU

- We give no **warranty** in relation to any statement made, or information given, by us or our representatives or employees, about any **lot** other than as set out in the **authenticity warranty** and, as far as we are allowed by law, all **warranties** and other terms which may be added to this agreement by law are excluded. The seller’s **warranties** contained in paragraph E1 are their own and we do not have any liability to you in relation to those **warranties**.
- (i) We are not responsible to you for any reason (whether for breaking this agreement or any other matter relating to your purchase of, or bid for, any **lot**) other than in the event of fraud or fraudulent misrepresentation by us or other than as expressly set out in these conditions of sale; or
- give any representation, warranty or guarantee or assume any liability of any kind in respect of any **lot** with regard to merchantability, fitness for a particular purpose, description, size, quality, condition, attribution, authenticity, rarity, importance, medium, provenance, exhibition history, literature, or historical relevance. Except as required by local law, any warranty of any kind is excluded by this paragraph.

(c) In particular, please be aware that our written and telephone bidding services, Christie’s LIVE™, **condition** reports, currency converter and saleroom video screens are free services and we are not responsible to you for any error (human or otherwise), omission or breakdown in these services.

(d) We have no responsibility to any person other than a buyer in connection with the purchase of any **lot**.

(e) If, in spite of the terms in paragraphs I(a) to (d) or E2(i) above, we are found to be liable to you for any reason, we shall not have to pay more than the **purchase price** paid by you to us. We will not be responsible to you for any reason for loss of profits or business, loss of opportunity or value, expected savings or interest, costs, damages, or expenses.

J OTHER TERMS

1 OUR ABILITY TO CANCEL

In addition to the other rights of cancellation contained in this agreement, we can cancel a sale of a **lot** if: (i) any of your warranties in paragraph E3 are not correct; (ii) we reasonably believe that completing the transaction is, or may be, unlawful; or (iii) we reasonably believe that the sale places us or the seller under any liability to anyone else or may damage our reputation.

2 RECORDINGS

We may videotape and record proceedings at any auction. We will keep any personal information confidential, except to the extent disclosure is required by law. However, we may, through this process, use or share these recordings with another **Christie’s Group** company and marketing partners to analyse our customers and to help us to tailor our services for buyers. If you do not want to be videotaped, you may make arrangements to make a telephone or written bid or bid on Christie’s LIVE™ instead. Unless we agree otherwise in writing, you may not videotape or record proceedings at any auction.

3 COPYRIGHT

We own the copyright in all images, illustrations and written material produced by or for us relating to a **lot** (including the contents of our catalogues unless otherwise noted in the catalogue). You cannot use them without our prior written permission. We do not offer any guarantee that you will gain any copyright or other reproduction rights to the **lot**.

4 ENFORCING THIS AGREEMENT

If a court finds that any part of this agreement is not valid or is illegal or impossible to enforce, that part of the agreement will be treated as being deleted and the rest of this agreement will not be affected.

5 TRANSFERRING YOUR RIGHTS AND RESPONSIBILITIES

You may not grant a security over or transfer your rights or responsibilities under these terms on the contract of sale with the buyer unless we have given our written permission. This agreement will be binding on your successors or estate and anyone who takes over your rights and responsibilities.

6 TRANSLATIONS

If we have provided a translation of this agreement, we will use this original version in deciding any issues or disputes which arise under this agreement.

7 PERSONAL INFORMATION

We will hold and process your personal information and may pass it to another **Christie’s Group** company for use as described in, and in line with, our privacy notice at www.christies.com/about-us/contact/privacy and if you are a resident of California you can see a copy of our California Consumer Privacy Act statement at www.christies.com/about-us/contact/ccpa.

8 WAIVER

No failure or delay to exercise any right or remedy provided under these Conditions of Sale shall constitute a waiver of that or any other right or remedy, nor shall it prevent or restrict the further exercise of that or any other right or remedy. No

single or partial exercise of such right or remedy shall prevent or restrict the further exercise of that or any other right or remedy.

9 LAW AND DISPUTES

This agreement, and any non-contractual obligations arising out of or in connection with this agreement, or any other rights you may have relating to the purchase of a **lot** will be governed by the laws of New York. Before we or you start any court proceedings (except in the limited circumstances where the dispute, controversy or claim is related to proceedings brought by someone else and this dispute could be joined to those proceedings), we agree we will each try to settle the dispute by mediation submitted to JAMS, or its successor, for mediation in New York. If the Dispute is not settled by mediation within 60 days from the date when mediation is initiated, then the Dispute shall be submitted to JAMS, or its successor, for final and binding arbitration in accordance with its Comprehensive Arbitration Rules and Procedures or, if the Dispute involves a non-U.S. party, the JAMS International Arbitration Rules. The seat of the arbitration shall be New York and the arbitration shall be conducted by one arbitrator, who shall be appointed within 30 days after the initiation of the arbitration. The language used in the arbitral proceedings shall be English. The arbitrator shall order the production of documents only upon a showing that such documents are relevant and material to the outcome of the Dispute. The arbitration shall be confidential, except to the extent necessary to enforce a judgment or where disclosure is required by law. The arbitration award shall be final and binding on all parties involved. Judgment upon the award may be entered by any court having jurisdiction thereof or having jurisdiction over the relevant party or its assets. This arbitration and any proceedings conducted hereunder shall be governed by Title 9 (Arbitration) of the United States Code and by the United Nations Convention on the Recognition and Enforcement of Foreign Arbitral Awards of June 10, 1958.

10 REPORTING ON WWW.CHRISTIES.COM

Details of all **lots** sold by us, including **catalogue descriptions** and prices, may be reported on www.christies.com. Sales totals are **hammer price** plus **buyer’s premium** and do not reflect costs, financing fees, or application of buyer’s or seller’s credits. We regret that we cannot agree to requests to remove these details from www.christies.com.

K GLOSSARY

auctioneer: the individual auctioneer and/or Christie’s.

authentic: authentic : a genuine example, rather than a copy or forgery of:

- the work of a particular artist, author or manufacturer, if the **lot** is described in the **Heading** as the work of that artist, author or manufacturer;
- a work created within a particular period or culture, if the **lot** is described in the **Heading** as a work created during that period or culture;
- a work for a particular origin source if the **lot** is described in the **Heading** as being of that origin or source; or
- in the case of gems, a work which is made of a particular material, if the **lot** is described in the **Heading** as being made of that material.

authenticity warranty: the guarantee we give in this agreement that a **lot** is **authentic** as set out in paragraph E2 of this agreement.

buyer’s premium: the charge the buyer pays us along with the **hammer price**.

catalogue description: the description of a **lot** in the catalogue for the auction, as amended by any saleroom notice.

Christie’s Group: Christie’s International Plc, its subsidiaries and other companies within its corporate group.

condition: the physical condition of a **lot**.

due date: has the meaning given to it paragraph F1(a).

estimate: the price range included in the catalogue or any saleroom notice within which we believe a **lot** may sell. **Low estimate** means the lower figure in the range and **high estimate** means the higher

figure. The **mid estimate** is the midpoint between the two.

hammer price: the amount of the highest bid the **auctioneer** accepts for the sale of a **lot**.

Heading: has the meaning given to it in paragraph E2.

lot: an item to be offered at auction (or two or more items to be offered at auction as a group).

other damages: any special, consequential, incidental or indirect damages of any kind or any damages which fall within the meaning of ‘special’, ‘incidental’ or ‘consequential’ under local law.

purchase price: has the meaning given to it in paragraph F1(a).

provenance: the ownership history of a **lot**.

qualified: has the meaning given to it in paragraph E2 and **Qualified Headings** means the paragraph headed **Qualified Headings** on the page of the catalogue headed ‘Important Notices and Explanation of Cataloguing Practice’.

reserve: the confidential amount below which we will not sell a **lot**.

saleroom notice: a written notice posted next to the **lot** in the saleroom and on www.christies.com, which is also read to prospective telephone bidders and notified to clients who have left commission bids, or an announcement made by the **auctioneer** either at the beginning of the sale, or before a particular **lot** is auctioned.

Subheading: has the meaning given to it in paragraph E2.

UPPER CASE type: means having all capital letters.

warranty: a statement or representation in which the person making it guarantees that the facts set out in it are correct.

SYMBOLS USED IN THIS CATALOGUE

The meaning of words coloured in **bold** in this section can be found at the end of the section of the catalogue headed ‘Conditions of Sale’

◦
Christie’s has a direct financial interest in the **lot**.
See Important Notices and Explanation of Cataloguing Practice.

△
Owned by Christie’s or another **Christie’s Group** company in whole or part. See Important Notices and Explanation of Cataloguing Practice.

◆
Christie’s has a direct financial interest in the **lot** and has funded all or part of our interest with the help of someone else. See Important Notices and Explanation of Cataloguing Practice.

□
Bidding by interested parties

Please note that **lots** are marked as a convenience to you and we shall not be liable for any errors in, or failure to, mark a **lot**.

IMPORTANT NOTICES AND EXPLANATION OF CATALOGUING PRACTICE

IMPORTANT NOTICES

△ Property Owned in part or in full by Christie’s

From time to time, Christie’s may offer a lot which it owns in whole or in part. Such property is identified in the catalogue with the symbol △ next to its lot number. Where Christie’s has an ownership or financial interest in every lot in the catalogue, Christie’s will not designate each lot with a symbol, but will state its interest in the front of the catalogue.

◦ Minimum Price Guarantees

On occasion, Christie’s has a direct financial interest in the outcome of the sale of certain lots consigned for sale. This will usually be where it has guaranteed to the Seller that whatever the outcome of the auction, the Seller will receive a minimum sale price for the work. This is known as a minimum price guarantee. Where Christie’s holds such financial interest we identify such lots with the symbol ◦ next to the lot number.

◦ ◆ Third Party Guarantees/Irrevocable bids

Where Christie’s has provided a Minimum Price Guarantee it is at risk of making a loss if the lot fails to sell. Christie’s sometimes chooses to share that risk with a third party who agrees prior to the auction to place an irrevocable written bid on the lot. If there are no other higher bids, the third party commits to buy the lot at the level of their irrevocable written bid. In doing so, the third party takes on all or part of the risk of the lot not being sold. Lots which are subject to a third party guarantee arrangement are identified in the catalogue with the symbol ◦ ◆.

In most cases, Christie’s compensates the third party in exchange for accepting this risk. Where the third party is the successful bidder, the third party’s remuneration is based on a fixed financing fee. If the third party is not the successful bidder, the remuneration may either be based on a fixed fee or is an amount calculated against the hammer price. The third party may continue to bid for the lot above the irrevocable written bid. Where the third party is the successful bidder, Christie’s will report the purchase price net of the fixed financing fee.

Third party guarantors are required by us to disclose to anyone they are advising their financial interest in any lots they are guaranteeing. However, for the avoidance of any doubt, if you are advised by or bidding through an agent on a lot identified as being subject to a third party guarantee, you should always ask your agent to confirm whether or not he or she has a financial interest in relation to the lot

•
Lot offered without **reserve** which will be sold to the highest bidder regardless of the pre-sale estimate in the catalogue.

~
Lot incorporates material from endangered species which could result in export restrictions. See Paragraph H2(b) of the Conditions of Sale.

■
See Storage and Collection pages in the catalogue.

Ψ
Lot incorporates material from endangered species that is not for sale and shown for display purposes only. See Paragraph H2(g) of the Conditions of Sale.

φ
Please note that this **lot** is subject to an import tariff. The amount of the import tariff due is a percentage of the final hammer price plus buyer’s premium. The buyer should contact Post Sale Services prior to the sale to determine the estimated amount of the import tariff. If the buyer instructs Christie’s to arrange shipping of the **lot** to a foreign address, the buyer will not be required to pay the import tariff. If the buyer instructs Christie’s to arrange shipping of the **lot** to a domestic address, if the buyer collects the property in person, or if the buyer arranges their own shipping (whether domestically or internationally), the buyer will be required to pay the import tariff. For the purpose of calculating sales tax, if applicable, the import tariff will be added to the final hammer price plus buyer’s premium and sales tax will be collected as per The Buyer’s Premium and Taxes section of the Conditions of Sale.

⌘ Bidding by interested parties

When a party with a direct or indirect interest in the lot who may have knowledge of the lot’s reserve or other material information may be bidding on the lot, we will mark the lot with this symbol ⌘. This interest can include beneficiaries of an estate that consigned the lot or a joint owner of a lot. Any interested party that successfully bids on a lot must comply with Christie’s Conditions of Sale, including paying the lot’s full Buyer’s Premium plus applicable taxes.

Post-catalogue notifications

In certain instances, after the catalogue has been published, Christie’s may enter into an arrangement or become aware of bidding that would have required a catalogue symbol. In those instances, a pre-sale or pre-lot announcement will be made.

Other Arrangements

Christie’s may enter into other arrangements not involving bids. These include arrangements where Christie’s has made loans or advanced money to consignors or prospective purchasers or where Christie’s has shared the risk of a guarantee with a partner without the partner being required to place an irrevocable written bid or otherwise participating in the bidding on the lot. Because such arrangements are unrelated to the bidding process they are not marked with a symbol in the catalogue.

FOR PICTURES, DRAWINGS, PRINTS AND MINIATURES

Terms used in this catalogue have the meanings ascribed to them below. Please note that all statements in this catalogue as to authorship are made subject to the provisions of the Conditions of Sale and **authenticity warranty**. Buyers are advised to inspect the property themselves. Written **condition** reports are usually available on request.

QUALIFIED HEADINGS

In Christie’s opinion a work by the artist.

**Attributed to ...”

In Christie’s qualified opinion probably a work by the artist in whole or in part.

**Studio of ...”/ “Workshop of ...”

In Christie’s qualified opinion a work executed in the studio or workshop of the artist, possibly under his supervision.

**Circle of ...”

In Christie’s qualified opinion a work of the period of the artist and showing his influence.

**Follower of ...”

In Christie’s qualified opinion a work executed in the artist’s style but not necessarily by a pupil.

**Manner of ...”

In Christie’s qualified opinion a work executed in the artist’s style but of a later date.

**After ...”

In Christie’s qualified opinion a copy (of any date) of a work of the artist.

“Signed ...”/“Dated ...”/

“Inscribed ...”

In Christie’s qualified opinion the work has been signed/dated/inscribed by the artist.

“With signature ...”/“With date ...”/

“With inscription ...”

In Christie’s qualified opinion the signature/date/inscription appears to be by a hand other than that of the artist.

The date given for Old Master, Modern and Contemporary Prints is the date (or approximate date when prefixed with ‘circa’) on which the matrix was worked and not necessarily the date when the impression was printed or published.

*This term and its definition in this Explanation of Cataloguing Practice are a qualified statement as to authorship. While the use of this term is based upon careful study and represents the opinion of specialists, Christie’s and the seller assume no risk, liability and responsibility for the **authenticity** of authorship of any **lot** in this catalogue described by this term, and the **Authenticity Warranty** shall not be available with respect to **lots** described using this term.

POST 1950 FURNITURE

All items of post-1950 furniture included in this sale are items either not originally supplied for use in a private home or now offered solely as works of art. These items may not comply with the provisions of the Furniture and Furnishings (Fire) (Safety) Regulations 1988 (as amended in 1989 and 1993, the “Regulations”). Accordingly, these items should not be used as furniture in your home in their current condition. If you do intend to use such items for this purpose, you must first ensure that they are reupholstered, restuffed and/or recovered (as appropriate) in order that they comply with the provisions of the Regulations. These will vary by department.

STORAGE AND COLLECTION

PAYMENT OF ANY CHARGES DUE

Specified **lots** (sold and unsold) marked with a filled square (■) not collected from Christie’s by 5.00pm on the day of the sale will, at our option, be removed to Christie’s Fine Art Storage Services (CFASS in Red Hook, Brooklyn). Christie’s will inform you if the **lot** has been sent offsite.

If the **lot** is transferred to Christie’s Fine Art Storage Services, it will be available for collection after the third business day following the sale.

Please contact Christie’s Post-Sale Service 24 hours in advance to book a collection time at Christie’s Fine Art Services. All collections from Christie’s Fine Art Services will be by pre-booked appointment only.

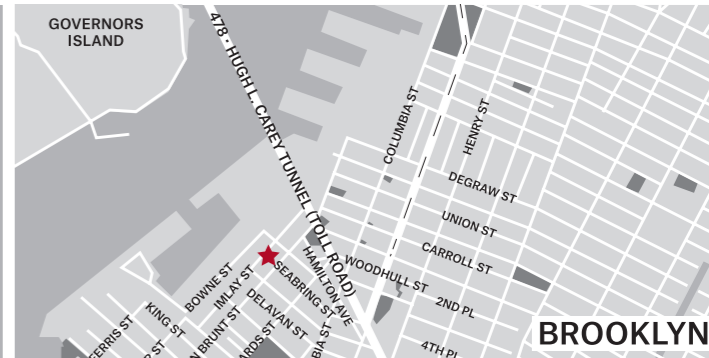
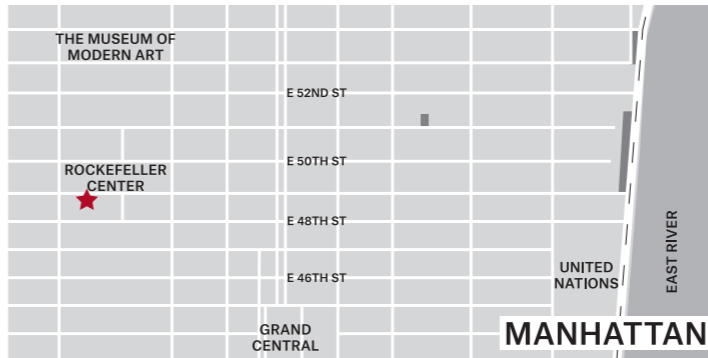
Please be advised that after 50 days from the auction date property may be moved at Christie’s discretion. Please contact Post-Sale Services to confirm the location of your property prior to collection.

Tel: +1 212 636 2650
Email: PostSaleUS@christies.com

Operation hours for both Christie’s Rockefeller and Christie’s Fine Art Storage are from 9:30 am to 5:00 pm, Monday – Friday.

Long-term storage solutions are also available per client request. CFASS is a separate subsidiary of Christie’s and clients enjoy complete confidentiality. Please contact CFASS New York for details and rates: +1 212 636 2070 or storage@cfass.com

STREET MAP OF CHRISTIE’S NEW YORK LOCATIONS



Christie’s Rockefeller Center

20 Rockefeller Plaza, New York 10020

Tel: +1 212 636 2000

PostSaleUS@christies.com

Main Entrance on 49th Street

Receiving/Shipping Entrance on 48th Street

Hours: 9.30 AM - 5.00 PM

Monday-Friday except Public Holidays

Christie’s Fine Art Storage Services (CFASS)

62-100 Imlay Street, Brooklyn, NY 11231

Tel: +1 212 974 4500

PostSaleUS@christies.com

Main Entrance on Corner of Imlay and Bowne St

Hours: 9.30 AM - 5.00 PM

Monday-Friday except Public Holidays

17/02/21

29/03/19

02/08/19



IDENTITY VERIFICATION

From January 2020, new anti-money laundering regulations require Christie's and other art businesses to verify the identity of all clients. To register as a new client, you will need to provide the following documents, or if you are an existing client, you will be prompted to provide any outstanding documents the next time you transact.

Private individuals:

- A copy of your passport or other government-issued photo ID
- Proof of your residential address (such as a bank statement or utility bill) dated within the last three months

Please upload your documents through your christies.com account: click 'My Account' followed by 'Complete Profile'. You can also email your documents to info@christies.com or provide them in person.

Organisations:

- Formal documents showing the company's incorporation, its registered office and business address, and its officers, members and ultimate beneficial owners
- A passport or other government-issued photo ID for each authorised user

Please email your documents to info@christies.com or provide them in person.

CHRISTIE'S

CHRISTIE'S

CHRISTIE'S INTERNATIONAL PLC

François Pinault, Chairman
Guillaume Cerutti, Chief Executive Officer
Jussi Pylkkänen, Global President
François Curiel, Chairman, Europe
Jean-François Palus
Stéphanie Renault
Héloïse Temple-Boyer
Sophie Carter, Company Secretary

INTERNATIONAL CHAIRMEN

Stephen Lash, Chairman Emeritus, Americas
The Earl of Snowdon, Honorary Chairman, EMERI
Charles Cator, Deputy Chairman, Christie's Int.
Xin Li-Cohen, Deputy Chairman, Christie's Int.

CHRISTIE'S AMERICAS

Marc Porter, Chairman
Jennifer Zatorski, President

CHAIRMAN'S OFFICE

Ben Hall, Chairman
Alexander Rotter, Chairman
Bonnie Brennan, Chairman
Cyanne Chutkow, Deputy Chairman
Sheri Farber, Deputy Chairman
Sara Friedlander, Deputy Chairman
John Hays, Deputy Chairman
Conor Jordan, Deputy Chairman
Richard Lloyd, Deputy Chairman
Maria C. Los, Deputy Chairman
Adrien Meyer, Co-Chairman
Ellanor Notides, Chairman, West Coast
Tash Perrin, Deputy Chairman
Jonathan Rendell, Deputy Chairman
Margot Rosenberg, Deputy Chairman
Caperia Ryan, Deputy Chairman
Barrett White, Deputy Chairman
Eric Widing, Deputy Chairman
Athena Zonars, Co-Chairman

CHRISTIE'S AMERICAS

SENIOR VICE PRESIDENTS

Kelly Ayers, Diane Baldwin, Heather Barnhart,
Alyson Barnes, Michael Bass, G. Max Bernheimer,
Rita Boyle, Catherine Busch, Max Carter,
Ana Maria Celis, Veronique Chagnon-Burke,
Angelina Chen, Dan Conn, Kathy Coumou,
Deborah Coy, Francois de Poortere,
Yasaman Djunic, Lydia Fenet, Jessica Fertig,
Dani Finkel, Johanna Flaum, Marcus Fox,
Vanessa Fusco, Sayuri Ganepola, Virgilio Garza,
Benjamin Gore, Helena Grubestic, Jennifer K. Hall,
Bill Hamm, William Haydock, Allison Heilman,
Alex Heminway, Darius Himes, Margaret Hoag,
Erik Jansson, Michael Jefferson, Rahul Kadakia,
Jessica Katz, Julie Kim, Stefan Kist,
Deepanjana Klein, David Kleiweg de Zwaan,
Samantha Koslow, Daphne Lingon, Gabriela Lobo,
Rebecca MacGuire, Erin McAndrew, Rick Moeser,
Illysa Ortsman, Joanna Ostrem, Jason Pollack,
Denise Ratinoff, Sonya Roth, Matt Rubinger,
Raj Sargule, Emily Sarokin, Caroline Sayan,
Elise de la Selle, Will Strafford, Gemma Sudlow,
Sarah Vandeweerd, Cara Walsh, Neda Whitney,
Marissa Wilcox, Jody Wilkie, Zackary Wright,
Steven J. Zick

VICE PRESIDENTS

Tylee Abbott, Nicole Arnot,
Christine Layng Aschwald, Danielle Austin,
Victoria Ayers, Marina Bertoldi, Diana Bramham,
Eileen Brankovic, Meghan Bunting,
Maryum Busby, Cristina Carlisle, Lauren Carlucci,
Michelle Cheng, Kristen de Bruyn, Aubrey Daval,
Cathy Delany, Jacqueline Dennis Subhash,
Christine Donahue, Caitlin Donovan,
Abby Farha, Christina Geiger, Joshua Glazer,
Lisa Gluck, Lindsay Griffith, Emily Grimball,
Margaret Gristina, Izabela Grocholski,
James Hamilton, Olivia Hamilton, Anne Hargrave,
Heather Jobin, Emily Kaplan, Sumako Kawai,
Caroline Kelly, Bennett Jackson, Peter Klarnet,
Rachel Koffsky, Abbey Lambek, Alexandra Lenobel,
Andrew Lick, Alexander Locke, Ryan Ludgate,
Samantha Margolis, Alex Marshall, Adam McCoy,
Nina Milbank, Michael Moore, Melissa Morris,
Danielle Mosse, Christopher Munro,
Takaaki Murakami, Libia Nahas, Laura Nagle,
Marysol Nieves, Remi Nouailles,
Margaret O'Connor, Jonquil O'Reilly,
Rachel Orkin-Ramey, Sam Pedder-Smith,
Carleigh Queenth, Joseph Quigley, Elizabeth Quirk,
Prakash Ramdas, Daphne Riou, Casey Rogers,
William Russell, Arianna Savage, Stacey Sayer,
Morris Scardigno, Alexa Shitanishi,
Hannah Solomon, Joanna Szymkowiak,
Arianna Tosto, Lillian Vasquez, Jill Waddell,
Izzie Wang, Michal Ward, Ben Whine,
Jennifer Wright, Cara Zimmerman

ASSOCIATE VICE PRESIDENTS

Nishad Avari, Caroline Baker, Anna Bar,
Alexandra Bass, Laura Betrián, Bernadine Boisson,
Tristan Bruck, Ally Butler, Michelle Carpanzano,
Laura DeMartis, Alessandro Diotallevi, Julie Drennan,
Sarah El-Tamer, Caroline Ervin, Jill Farquharson,
Paola Saracino Fendi, Danielle Finn, William Fischer,
Sara Fox, Kristen France, Juarez Francis,
Hilary Friedman, Jacqueline Gascoigne,
Douglas Goldberg, Julia Gray, Abbey Green,
John Hawley, Courtney Heisen, Amy Indyke,
Stephen Jones, Paige Kestenman, Sibyl Lafontant,
Isabella Lauria, David Lieu, Anita Martignetti,
Laura Mathis, Christopher Mendoza,
Camille Massaro-Menz, Katie Merrill, Leo Montan,
Megan Murphy, Taylor Murtishaw, Alexandra O'Neill,
Vicki Paloympis, Daniel Peros, Amy Peterson,
Nell Plumfield, Claibourne Poindexter,
Rebecca Roundtree, Reed Ryan, Nicole Sales,
Emily Salzberg, Elizabeth Seigel, Jill Sieffert,
Jason Simonds, Alexa Smith, Hilary Smith,
Victoria Solivan, Laura Sumser, Victoria Tudor,
Grace Voges, Izzie Wang, Seth Watsky,
Heather Weintraub, Rachael White Young,
Kathryn Widing, Gretchen Yagielski

AMERICAS REPRESENTATIVES

Lisa Cavanaugh, Lydia Kimball, Juanita Madrinan,
David G. Ober, Nancy Rome, Brett Sherlock,
Alan Wintermute